


## SPECIAL ARTICLE

OPEN

# Cystic fibrosis screening, evaluation, and management of hepatobiliary disease consensus recommendations

Zachary M. Sellers<sup>1</sup>  | David N. Assis<sup>2</sup> | Shruti M. Paranjape<sup>3</sup> |  
 Meghana Sathe<sup>4</sup> | Frank Bodewes<sup>5</sup> | Melissa Bowen<sup>6</sup> | Marco Cipolli<sup>7</sup> |  
 Dominique Debray<sup>8</sup> | Nicole Green<sup>9</sup> | Kara S. Hughan<sup>10</sup> | William R. Hunt<sup>11</sup> |  
 Julio Leey<sup>12</sup> | Simon C. Ling<sup>13</sup> | Giuseppe Morelli<sup>14</sup> | Daniel Peckham<sup>15</sup> |  
 Rebeca S. Pettit<sup>16</sup> | Alexander Philbrick<sup>17</sup> | Janis Stoll<sup>18</sup> | Kay Vavrina<sup>19</sup> |  
 Stacy Allen<sup>20</sup> | Tara Goodwin<sup>20</sup> | Sarah E. Hempstead<sup>21</sup> | Michael R. Narkewicz<sup>22</sup>

<sup>1</sup>Department of Pediatrics, Division of Pediatric Gastroenterology, Hepatology, and Nutrition, Stanford University, Palo Alto, California, USA

<sup>2</sup>Department of Medicine, Section of Digestive Diseases, Yale School of Medicine, New Haven, Connecticut, USA

<sup>3</sup>Division of Pediatric Pulmonology, Johns Hopkins University, Baltimore, Maryland, USA

<sup>4</sup>Department of Pediatrics, Division of Pediatric Gastroenterology and Nutrition, UT Southwestern, Dallas, Texas, USA

<sup>5</sup>Department of Pediatric Gastroenterology, University Medical Center Groningen, Groningen, The Netherlands

<sup>6</sup>Department of Advanced Lung Disease and Lung Transplant, Inova Fairfax Hospital, Falls Church, Virginia, USA

<sup>7</sup>Cystic Fibrosis Center, Azienda Ospedaliera Universitaria Integrata, Verona, Italy

<sup>8</sup>Pediatric Hepatology Unit, AP-HP, Hôpital Necker-Enfants malades, Paris, France

<sup>9</sup>Department of Pediatrics, Division of Pediatric Gastroenterology, Hepatology, and Nutrition, Seattle Children's Hospital and University of Washington, Seattle, Washington State, USA

<sup>10</sup>Department of Pediatrics, Division of Pediatric Endocrinology and Metabolism, UPMC Children's Hospital of Pittsburgh and University of Pittsburgh School of Medicine, Pittsburgh, Pennsylvania, USA

<sup>11</sup>Department of Medicine, Division of Pulmonary, Allergy, Critical Care and Sleep, Emory University, Atlanta, Georgia, USA

<sup>12</sup>Department of Medicine, Division of Endocrinology, Diabetes and Metabolism, University of Florida, Gainesville, Florida, USA

<sup>13</sup>Department of Paediatrics, Division of Gastroenterology, Hepatology & Nutrition, The Hospital for Sick Children, University of Toronto, Toronto, Ontario, Canada

<sup>14</sup>Department of Medicine, Division of Gastroenterology, Hepatology, and Nutrition, University of Florida, Gainesville, Florida, USA

<sup>15</sup>Leeds Institute of Medical Research at St. James's, University of Leeds, Leeds, UK

<sup>16</sup>Riley Hospital for Children at IU Health, Indianapolis, Indiana, USA

<sup>17</sup>Department of Specialty Pharmacy, Northwestern Medicine, Chicago, Illinois, USA

<sup>18</sup>Department of Pediatrics, Division of Gastroenterology, Hepatology, and Nutrition, Washington University School of Medicine, St Louis, Missouri, USA

<sup>19</sup>University of Texas, Health Science Center, San Antonio, Texas, USA

<sup>20</sup>CF Parent Community Advisor to Cystic Fibrosis Foundation, USA

<sup>21</sup>Cystic Fibrosis Foundation, Bethesda, Maryland, USA

<sup>22</sup>Department of Pediatrics, Section of Pediatric Gastroenterology, Hepatology, and Nutrition, Digestive Health Institute, Children's Hospital Colorado, University of Colorado School of, Aurora, Colorado, USA

**Abbreviations:** aCFLD, advanced CF liver disease; AFP, alpha-fetoprotein; ALT, alanine aminotransferase; APRI, AST-to-Platelet Ratio Index; AST, aspartate aminotransferase; CF, cystic fibrosis; CFF, Cystic Fibrosis Foundation; CFHBI, CF hepatobiliary involvement; CFRD, CF-related diabetes; CFTR, cystic fibrosis transmembrane conductance regulator; EGD, esophagogastroduodenoscopy; ERCP, endoscopic retrograde cholangiopancreatography; EVL, endoscopic variceal ligation; FEV<sub>1</sub>, forced expiratory volume in 1 second; GGT, gamma-glutamyl transferase; GPR, GGT-to-platelet ratio; NSBB, nonselective beta-blocker; PwCF, persons with CF; SWE, shear-wave elastography; TE, transient elastography; UDCA, ursodeoxycholic acid; US, ultrasound.

Supplemental Digital Content is available for this article. Direct URL citations are provided in the HTML and PDF versions of this article on the journal's website, [www.hepjournal.com](http://www.hepjournal.com).

This is an open access article distributed under the terms of the Creative Commons Attribution-Non Commercial-No Derivatives License 4.0 (CCBY-NC-ND), where it is permissible to download and share the work provided it is properly cited. The work cannot be changed in any way or used commercially without permission from the journal.

Copyright © 2023 The Author(s). Published by Wolters Kluwer Health, Inc.

**Correspondence**

Zachary M. Sellers, Division of Pediatric Gastroenterology, Hepatology, and Nutrition, 1701 Page Mill Road, Palo Alto, CA, 94304, USA. Email: [zsellers@stanford.edu](mailto:zsellers@stanford.edu)

Michael R. Narkewicz, Children's Hospital Colorado, B290, 13123 East 16th Ave, Aurora, CO 80045, USA. Email: [Michael.narkewicz@childrenscolorado.org](mailto:Michael.narkewicz@childrenscolorado.org)

**Abstract**

Cystic fibrosis (CF) may cause a spectrum of hepatobiliary complications, including portal hypertension, multilobular cirrhosis, and liver failure. Current guidelines on the detection and monitoring of hepatobiliary complications in CF were published in 1999. The CF Foundation assembled a committee to evaluate research advances and formulate revised guidelines for CF-associated liver disease. A committee of hepatologists, gastroenterologists, pulmonologists, pharmacists, nurses, dietitians, individuals with CF, and the parents of a child with CF devised “population, intervention, comparison, and outcome” questions regarding hepatobiliary disease in CF. PubMed literature searches were performed for each population, intervention, comparison, and outcome question. Recommendations were voted on with 80% agreement required to approve a recommendation. Public comment on initial recommendations was solicited prior to the formulation of final recommendations. Thirty-one population, intervention, comparison, and outcome questions were assembled, 6401 manuscripts were title screened for relevance, with 1053 manuscripts undergoing detailed full-text review. Seven recommendations were approved for screening, 13 for monitoring of existing disease, and 14 for treatment of CF-associated hepatobiliary involvement or advanced liver disease. One recommendation on liver biopsy did not meet the 80% threshold. One recommendation on screening ultrasound was revised and re-voted on. Through a multidisciplinary committee and public engagement, we have assembled updated recommendations and guidance on screening, monitoring, and treatment of CF-associated hepatobiliary involvement and advanced liver disease. While research gaps remain, we anticipate that these recommendations will lead to improvements in CF outcomes through earlier detection and increased evidence-based approaches to monitoring and treatment.

**INTRODUCTION**

Cystic fibrosis (CF), caused by pathogenic autosomal recessive mutations in the cystic fibrosis transmembrane conductance regulator (*CFTR*) gene, may result in a host of hepatobiliary pathologies, ranging from cholelithiasis, hepatic steatosis, and liver fibrosis to multilobular cirrhosis, portal hypertension, and in a subset of individuals, liver failure necessitating liver transplant or even liver-related death.<sup>[1]</sup> In 1999, the CF Foundation published recommendations for the diagnosis and management of CF-associated liver disease.<sup>[2]</sup> Since that time, research on hepatobiliary disease in CF has advanced, expanding our insights on the pathogenesis of disease, appreciating the range of complications, investigating the use of new technologies for diagnosis and monitoring of disease,

and introduction of new therapies such as the *CFTR* potentiators and correctors. While collectively, these have enriched our knowledge and tools to address hepatobiliary disease in CF, they have also introduced many questions about how to care for persons with CF (PwCF) who have suspected or confirmed hepatobiliary disease. To address these questions, the CF Foundation established a committee to generate new consensus guidelines and recommendations for the diagnosis, monitoring, and treatment of CF-associated hepatobiliary complications based on published literature and expert opinion. Public comments on recommendations were also obtained. We anticipate that these new guidelines will improve early diagnosis and care for children and adults with CF-associated hepatobiliary disease and ultimately improve the morbidity and mortality of PwCF. Through this

process, we have identified gaps that need additional research, which we hope will further inform research priorities for clinical care advancements for patients with CF with hepatobiliary disease.

## METHODS

The CF Foundation (CFF) assembled a committee of multidisciplinary CF care team members, including hepatologists, gastroenterologists, pulmonologists, pharmacists, nurses, dietitians, an individual with CF, and the parents of a child with CF. The committee included members from the United States, the United Kingdom, the Netherlands, Canada, Italy, and France. The committee met virtually in August 2020 to develop their population, intervention, comparison, and outcome questions. The committee was divided into 3 workgroups to focus on screening, monitoring, and treatment (Supplemental Figures 1-3, <http://links.lww.com/HEP/I76>). The workgroups conducted literature searches in PubMed for each population, intervention, comparison, and outcome question between March and October 2021, with a final query in April 2023, using the medical subject heading terms provided in Supplemental Methods and Supplemental Tables 1-3, <http://links.lww.com/HEP/I76>. The committee systematically reviewed the results of these searches. The committee met multiple times between January and March 2022 to discuss and vote on recommendation statements. An *a priori* threshold of 80% agreement was required to advance a recommendation. Following the initial draft, the manuscript was posted on the CF Foundation's website, and individual public comments were solicited by means of various communication mechanisms from individuals with interests in hepatology, GI, and CF for a 2-week period from September 14, 2022, to September 28, 2022, after which the committee evaluated the feedback. Based on public feedback, the language of some recommendations was clarified (without major changes in intention), and a re-vote on modification of one recommendation was performed.

The terminology for CF hepatobiliary involvement (CFHBI) is evolving. For these guidelines, we used the following terms to categorize CFHBI based on the existing literature. Definitions of CFHBI and advanced CF liver disease (aCFLD) were adopted from the existing literature and are as follows:

- aCFLD refers to having one (or more) of the following: nodular liver, advanced fibrosis (F4), multilobular cirrhosis with or without portal hypertension, or noncirrhotic portal hypertension
- CFHBI refers to having one (or more) of the following without features of aCFLD: hepatomegaly, liver fibrosis (<F4), increased liver stiffness by elastography (<F4), hepatic steatosis, focal biliary cirrhosis,

cholestasis, persistent (>3–6 mo) elevated serum liver function tests (any level above upper limit of normal), abnormal liver imaging, cholelithiasis, sclerosing cholangitis, or hepatolithiasis.

For the purposes of this document, children are defined as birth to 17 years of age and adults as 18 years of age and older.

The CF Foundation intends for this guideline to summarize evidence and provide reasonable clinical recommendations based on that evidence to clinicians, patients, and other stakeholders. The application of these recommendations should not be mandated. Care decisions regarding individual patients should be made using a combination of these recommendations, the associated benefit-risk assessment of treatment options from the clinical team, the patient's individual and unique circumstances, as well as the goals and preferences of the patients and families that the team serves, as a part of shared decision-making between the patient and clinician.

## Screening recommendations

S1. The CFF recommends that annual labs [total bilirubin, aspartate aminotransferase (AST), alanine aminotransferase (ALT), alkaline phosphatase, gamma-glutamyl transferase (GGT), platelet count] should be performed at a time of clinical stability for identification of hepatobiliary involvement in all PwCF starting at CF diagnosis.

CFHBI can manifest in childhood,<sup>[3,4]</sup> adolescence, and/or adulthood.<sup>[5,6]</sup> Liver test abnormalities may precede imaging abnormalities<sup>[7]</sup> and correlate with fibrosis.<sup>[8,9]</sup> Early identification of CFHBI affects care through staging, regular monitoring, and treatment. Common liver test abnormalities in CF may include elevations in serum AST, ALT, GGT, and/or alkaline phosphatase. Elevated conjugated bilirubin may occur in aCFLD or with biliary obstruction. Portal hypertension may also cause an absolute or relative thrombocytopenia if baseline thrombocytosis is present.<sup>[10,11]</sup> Prior guidelines recommended further action at 1.5–2x upper limit of normal values for increased specificity.<sup>[2]</sup> However, this, coupled with the use of high thresholds, can contribute to delayed diagnosis. Therefore, it is important to use age and sex-normative values,<sup>[12,13]</sup> and we recommend further evaluation if any abnormalities are persistent (>3–6 mo). Few studies have evaluated the optimal timing and frequency of lab testing<sup>[14]</sup>; however, the CFF recommends that these tests be performed on an annual basis beginning at CF diagnosis. Many PwCF have transient elevation of liver enzymes during systemic inflammation or antibiotic treatment; however, CFHBI is characterized by persistent liver test abnormalities,<sup>[15,16]</sup> and annual screening should be performed during a time of relative clinical

**TABLE 1** Noninvasive determinants of liver fibrosis in CF

Index	Formula	Thresholds for aCFLD	Hepatitis B threshold for F3-F4 fibrosis <sup>a</sup>
Liver fibrosis indices			
APRI	$[(\text{AST}/\text{ULN AST})/\text{PLT}] \times 100$	$\geq 0.545^b$	< 0.5 normal, > 1.5 fibrosis <sup>c</sup>
GPR	$[(\text{GGT}/\text{ULN GGT})/\text{PLT}] \times 100$	$\geq 0.545^b$	$\geq 0.32^c$
FIB-4	$(\text{Age in years} \times \text{AST})/(\text{PLT} \times \sqrt{\text{ALT}})$	Insufficient data	Insufficient data
Forns Index	$[(7.811 - 3.131 \times \ln(\text{PLT})) + [(0.781 \times \ln(\text{GGT}))] + [(3.467 \times \ln(\text{Age})) - (0.014 \times \text{cholesterol})]$	Insufficient data	Insufficient data
Liver stiffness measurement			
Transient elastography <sup>d</sup>	Thresholds for CFHBI	Thresholds for aCFLD (F3-F4 fibrosis)	Hepatitis B threshold for F3-F4 fibrosis
2D shear wave	> 5.95 kPa <sup>e</sup>	> 8.7 kPa <sup>f</sup>	> 8.8 kPa <sup>g</sup>
Elastography	> 1.45 m/s <sup>h</sup>	> 1.84 m/s <sup>h</sup>	> 8.9 kPa <sup>ij</sup>
	> 6.85 kPa <sup>k</sup>	> 9.05 kPa <sup>k</sup>	—

<sup>a</sup>Values for hepatitis B are included for comparison.

<sup>b</sup>Recalculated using AST ULN 30 U/L, GGT ULN 20 U/L.<sup>[3]</sup>

<sup>c</sup>AST U/L 40, GGT ULN 60 U/L.<sup>[4,5]</sup>

<sup>d</sup>While both transient elastography and MR elastography values are in kilopascal, they have different thresholds for fibrosis.

<sup>e</sup>AUROC of 0.76 with sensitivity of 55% and specificity of 87%.<sup>[6]</sup>

<sup>f</sup>AUROC of 0.87 with sensitivity of 75% and specificity of 100%.<sup>[7]</sup>

<sup>g</sup>AUROC of 0.887 with sensitivity of 74.0% and specificity of 63.8%.<sup>[8]</sup>

<sup>h</sup>AUROC for normal versus abnormal MRI elastography (MRE) of 0.94. AUROC for mild-moderate versus severe fibrosis on MRE of 0.79.<sup>[9]</sup>

<sup>i</sup>AUROC of 0.92.<sup>[10]</sup>

<sup>j</sup>Threshold for chronic liver diseases, not specifically hepatitis B.

<sup>k</sup>AUROC 0.79 for CFHBI versus no CFHBI with sensitivity of 75% and specificity of 71%. AUROC of 0.95 for advanced liver fibrosis with sensitivity of 88% and specificity of 87%.<sup>[11]</sup>

Abbreviations: aCFLD, advanced CF liver disease; ALT, alanine aminotransferase; APRI, AST-to-Platelet Ratio Index; AST, aspartate aminotransferase; CF, cystic fibrosis; CFHBI, CF hepatobiliary involvement; 2-D, two-dimensional; FIB-4, fibrosis-4; GPR, GGT-to-platelet ratio; GGT, gamma-glutamyl transferase; PLT, platelets; ULN, upper limit of normal.

stability (eg, no active treatment for acute pulmonary exacerbation or infection). Calculation of liver fibrosis indices based on routine laboratory tests, including AST-to-Platelet Ratio Index (APRI), fibrosis-4, and GGT-to-Platelet Ratio (GPR) can detect advanced fibrosis and portal hypertension and may be more specific than liver tests alone since they include platelet count. APRI is the most studied in CF and may be useful to identify aCFLD.<sup>[5,6,17–19]</sup> GPR may be particularly useful in detecting early biliary disease prior to significant hepatocyte injury.<sup>[20]</sup> Optimal thresholds have not been broadly accepted in CF for any of the fibrosis indices, and therefore, the utility of these indices in screening PwCF for possible CFHBI or aCFLD is uncertain.

S2. The CFF recommends annual abdominal physical examination for hepatosplenomegaly for identification of advanced liver disease in all PwCF starting at CF diagnosis.

Persons with CFHBI and aCFLD may manifest abnormalities on physical exam.<sup>[2]</sup> These include hepatomegaly, defined as enlargement of the liver span below the mid-clavicular line, and/or splenomegaly, defined as a palpable spleen on abdominal examination. Of these, hepatomegaly is the most common<sup>[21]</sup> with some studies reporting this in up to 30% of PwCF.<sup>[22,23]</sup> A study correlating physical exam with liver biopsy in CF reported

a sensitivity and specificity of 60% and 44% for hepatomegaly and 93% and 57% for splenomegaly in the detection of aCFLD.<sup>[24]</sup> While the specificity of abdominal examination is relatively low, it is noninvasive, easily repeatable, and requires minimal additional time and cost. During the examination, percussion and palpation of the entire liver and spleen with measurement of the liver span at the mid-clavicular line should be performed. One longitudinal study evaluated physical examination for hepatomegaly and splenomegaly in children with CF,<sup>[25]</sup> finding an incremental detection of abnormalities through annual examination. There is a lack of objective evidence to recommend screening abdominal examination more frequently than annually in PwCF not known to have CFHBI or aCFLD.

S3a. The CFF recommends abdominal ultrasound (US) to assess the liver and spleen at least every 2 years in PwCF from childhood until late adolescence, starting at age 3 or at diagnosis, if diagnosed after age 3.

S3b. In adults with CF, there is value in baseline screening for CFHBI, but the optimal frequency of subsequent imaging for those with normal baseline findings is unknown, and a specific recommendation cannot currently be made.

Together with laboratory tests and physical examination, periodic abdominal US imaging to evaluate the liver and spleen is recommended for screening in all PwCF. US is a

**TABLE 2** Recommendation statements

No.	Screening	Vote, n (%)
S1	The CFF recommends that annual labs (total bilirubin, AST, ALT, alkaline phosphatase, GGT, platelet count) should be performed, at a time of clinical stability, for identification of hepatobiliary involvement in all persons with CF starting at CF diagnosis.	22/22 (100)
S2	The CFF recommends annual physical abdominal examination for hepatosplenomegaly for identification of advanced liver disease in all persons with CF starting at CF diagnosis.	22/22 (100)
S3a	The CFF recommends abdominal ultrasound to assess the liver and spleen at least every 2 years in persons with CF from childhood until late adolescence, starting at age 3 or at diagnosis, if diagnosed after age 3.	21/22 (95)
S3b	In adults with CF, there is value in baseline screening for CFHBI, but the optimal frequency of subsequent imaging for those with normal baseline findings is unknown and a specific recommendation cannot currently be made.	21/22 (95)
S4	The CFF recommends that persons with CF who are found to have hepatobiliary involvement (abnormal physical exam, persistently elevated liver enzymes, or abnormal abdominal ultrasound findings), should undergo baseline liver elastography, when available, for the identification of advanced liver disease.	22/22 (100)
S5	The CFF recommends that persons with CF and hepatobiliary involvement should receive a standardized evaluation for other causes of liver disease.	22/22 (100)
S6	The CFF recommends that all persons with CF who have cholestatic liver test Direct Bilirubin, GGT, and/or alkaline phosphatase) elevation, abdominal pain consistent with biliary cause, and inconclusive abdominal ultrasound should undergo magnetic resonance cholangiopancreatography (MRCP) to detect hepatolithiasis, choledocholithiasis, biliary strictures, and/or biliary obstruction.	22/22 (100)
No.	Monitoring	Vote, n (%)
M1	The CFF recommends that in persons with CF and liver involvement, a liver-specific physical examination be performed at least annually and at each in-person visit to monitor for the progression of disease.	22/22 (100)
M2	The CFF recommends that for persons with CF and hepatobiliary involvement at least one liver fibrosis index be calculated and followed at least annually.	21/22 (95)
M3	The CFF recommends for persons with CF and hepatobiliary involvement an abdominal US be performed at least every 2 y to monitor for the progression of disease.	22/22 (100)
M4	The CFF recommends that persons with CF and hepatobiliary involvement or advanced liver disease undergo evaluation of liver stiffness with elastography at least annually, if available, to monitor for the progression of disease.	22/22 (100)
M5	The CFF recommends that persons with CF hepatobiliary involvement or advanced liver disease receive consultation with a pharmacist with experience in CF and hepatobiliary disease to identify high-risk medications, polypharmacy, therapy modifications, and risk based on their hepatobiliary disease every 6 mo, unless there have been no medication changes, to improve morbidity and mortality.	22/22 (100)
M6	The CFF recommends that persons with CF and advanced liver disease undergo liver-specific physical examination and measurement of AST, ALT, GGT, alkaline phosphatase, conjugated (or direct) bilirubin, albumin, platelets, and international normalized ratio (INR) at least every 6 mo to detect progression of liver disease.	22/22 (100)
M7	The CFF recommends that persons with CF and advanced liver disease, receive a nutritional assessment for malnutrition and liver-specific macronutrient and micronutrient deficiencies every 6 mo by a dietitian experienced in CF. When abnormalities are identified a treatment plan and monitoring of nutritional rehabilitation should be developed.	22/22 (100)
M8	The CFF recommends for persons with CF and advanced liver disease beginning CF-related diabetes (CFRD) screening at the diagnosis of advanced liver disease, even if earlier than age 10 and then annually thereafter, to provide early diagnosis and treatment of CFRD (using methodologies described in the most current CFRD Guidelines).	22/22 (100)
M9	The CFF recommends that persons with CF and advanced liver disease receive multidisciplinary care from pulmonology, gastroenterology/hepatology, endocrinology and when appropriate, a transplant center, to optimize liver outcomes.	22/22 (100)
M10a	The CFF recommends that adults with CF and advanced liver disease with esophageal varices be managed according to the relevant most current published guidelines, such as those from the American Association for the Study of Liver Diseases or the Baveno group.	22/22 (100)
M10b	The CFF cannot provide a recommendation for or against endoscopic variceal surveillance in children with advanced liver disease, due to insufficient evidence.	22/22 (100)
M11a	The CFF recommends that all children with CF with cirrhosis or suspected cirrhosis, are screened annually for HCC with abdominal US and serum alpha-fetoprotein.	21/22 (95)
M11b	The CFF recommends that all adults with CF with cirrhosis or suspected cirrhosis are screened for HCC using the most current screening guidelines as per American Association for the Study of Liver Diseases or European Association for the Study of Liver Disease.	22/22 (100)



TABLE 2. (continued)

No.	Treatment	Vote, n (%)
T1	The CFF recommends against the routine use of ursodeoxycholic acid to prevent advanced liver disease in all persons with CF.	21/21 (100 <sup>a</sup> )
T2a	Efficacy: The CFLD Guidelines Committee cannot recommend for or against the use of CFTR modulator treatment to improve liver outcomes in persons with CF and hepatobiliary involvement or advanced liver disease when age-appropriate, genotype-specific modulator therapy is available due to insufficient evidence.	16/16 (100 <sup>a</sup> )
T2b	Safety: The CFLD Guidelines Committee recommends, based on expert opinion, the use of CFTR modulator treatment in persons with CF and CF hepatobiliary involvement in the setting of close monitoring by a CF gastroenterologist and/or hepatologist and pharmacist because the benefits to CF lung disease outweigh the liver-related risk.	16/16 (100 <sup>a</sup> )
T2c	Safety: The CFLD Guidelines Committee cannot recommend for or against the use of CFTR modulators in persons with CF with advanced liver disease and portal hypertension without decompensation due to insufficient evidence.	16/16 (100 <sup>a</sup> )
T2d	Safety: The CFLD Guidelines Committee recommends against CFTR modulator use in persons with CF and decompensated advanced CF liver disease, as determined by a consultant Hepatologist based on thresholds such as sustained INR > 1.5, abnormal direct bilirubin, low albumin, refractory ascites, or encephalopathy.	16/16 (100 <sup>a</sup> )
T2e	Transplant: the CFLD Guidelines Committee recommends, based on expert opinion, for CFTR modulator treatment in persons with CF who have received a liver transplant because the benefits to CF lung disease outweigh the liver-related risk. There should be close monitoring and collaboration with the transplant team/pharmacist in these individuals as drug-drug interactions need to be noted and monitored.	16/16 (100 <sup>a</sup> )
T3	The CFF recommends cholecystectomy for all CF persons with symptomatic gallbladder disease and other interventions (such as ERCP) for all CF persons with symptomatic biliary tract disease.	22/22 (100)
T4	The CFF cannot recommend for or against the use of nonselective beta-blocker treatment for the prevention or treatment of variceal bleeding in persons with CF and advanced liver disease with portal hypertension due to insufficient evidence.	22/22 (100)
T5a	The CFF cannot recommend for or against primary variceal prophylaxis for children with CF and advanced liver disease with portal hypertension and varices due to insufficient evidence.	22/22 (100)
T5b	The CFF recommends that for children with CF and advanced liver disease with portal hypertension, varices, and prior variceal hemorrhage, current guidelines for secondary prophylaxis be followed in consultation with a pulmonologist and anesthesiologist with expertise in CF.	22/22 (100)
T5c	The CFF recommends that adults with CF and advanced liver disease and portal hypertension (with or without prior variceal hemorrhage), should undergo primary or secondary prophylaxis according to current guidelines in consultation with a pulmonologist and anesthesiologist with expertise in CF.	22/22 (100)
T6a	The CFF recommends that for persons with CF and cirrhotic or noncirrhotic portal hypertension with INR ≤ 1.5, normal direct bilirubin and albumin, no encephalopathy and no refractory ascites, portosystemic shunt or liver transplantation be considered as long-term treatment.	22/22 (100)
T6b	The CFF recommends that for persons with CF and cirrhotic or noncirrhotic portal hypertension with INR > 1.5, abnormal direct bilirubin, low albumin, refractory ascites or encephalopathy, liver transplantation be considered as the appropriate long-term treatment. Portosystemic shunt placement may be a bridge to transplantation for management of intractable variceal bleeding.	22/22 (100)
T7	The CFF recommends that for persons with CF and advanced liver disease and advanced lung disease that may be considered for lung or liver transplant, combined lung-liver transplantation be considered to optimize long-term treatments.	22/22 (100)

<sup>a</sup>Reduced numbers due to potential conflicts of interest.

Abbreviations: ALT, alanine aminotransferase; AST, aspartate aminotransferase; CF, cystic fibrosis; CFF, Cystic Fibrosis Foundation; CFHBI, CF hepatobiliary involvement; CFRD, CF-related diabetes; CFTR, cystic fibrosis transmembrane conductance regulator; ERCP, endoscopic retrograde cholangiopancreatography; GGT, gamma-glutamyl transferase; MRCP, magnetic resonance cholangiopancreatography; US, ultrasound.

readily available, noninvasive test with modest cost, which can identify abnormalities not detected by screening with physical exam or laboratory tests,<sup>[26,27]</sup> such as the presence of echogenicity from steatosis, heterogeneous parenchyma and surface nodularity of the liver, and findings suggestive of portal hypertension (ascites, mesenteric edema, and splenic enlargement). Abnormal findings during screening can help in the characterization of CFHBI and evaluation for aCFLD.<sup>[11,19]</sup> Dedicated vascular assessment by Doppler is not technically necessary to detect

portal venous reversal of flow. However, centers should consult with local radiologists for local preferences on use of Doppler for this purpose. Since US abnormalities in PwCF can develop at any age, initiation of screening should occur starting at age 3, or at diagnosis if diagnosed after age 3. While some studies have reported on annual screening abdominal US in PwCF,<sup>[28]</sup> there is insufficient evidence to recommend imaging on a yearly basis and defining the optimal frequency of US imaging is an important topic for future research. Specifically, studies to

**TABLE 3** Statement with no consensus

PICO question	Statement considered by the committee	Percent consensus (did not achieve threshold)
In all persons with CF who are found to have portal hypertension (splenomegaly, thrombocytopenia, varices), is a diagnostic liver biopsy better than no liver biopsy at differentiating cirrhosis vs. noncirrhotic portal hypertension?	The committee recommends consideration of a diagnostic liver biopsy to differentiate cirrhosis from noncirrhotic portal hypertension in persons with CF who are found to have portal hypertension.	77.2

Abbreviations: CF, cystic fibrosis; PICO, population, intervention, comparison, and outcome.

define risk stratification of individuals at high risk of developing CFHBI despite a normal baseline US will enable a more precise approach to US screening. Based in part on the PUSH Study of US imaging in pediatric populations with CF,<sup>[29]</sup> the CFF recommends US imaging every 2 years from childhood through late adolescence. In adults with CF, a baseline screening is recommended to detect abnormal US patterns. However, there are no data to define the frequency of subsequent US imaging if the initial screening results are normal. Therefore, a specific recommendation for follow-up US imaging in adults with CF cannot be currently made.

S4. The CFF recommends that PwCF who are found to have hepatobiliary involvement (abnormal physical exam, persistently elevated liver enzymes, or abnormal abdominal US findings) should undergo baseline liver elastography, when available, for the identification of advanced liver disease.

While persistent elevation of liver tests, abnormal physical exam (hepatomegaly and splenomegaly), and US abnormalities may be sufficient to detect aCFLD, these modalities are not sufficiently sensitive for the detection of earlier stages of clinically relevant liver fibrosis. Differentiation of mild to moderate (stage F0-1) from more advanced liver fibrosis (stage F2-4) at baseline during diagnosis has been shown to impact prognosis and clinical care in many chronic liver diseases such as primary biliary cholangitis.<sup>[30]</sup> Liver stiffness measurement is ideal for this purpose as it is noninvasive and can be repeated over time. Modalities include transient elastography (TE), US shear-wave elastography (SWE), and MRI with elastography, each of which has been tested in PwCF liver involvement.<sup>[5,18,31]</sup> Among these modalities, TE and SWE are the most readily available and most studied in CF and other chronic liver diseases.<sup>[32–38]</sup> Published small cohort studies for TE and SWE thresholds for PwCF are variable but have been described (Table 1).

S5. The CFF recommends that PwCF and hepatobiliary involvement should receive a standardized evaluation for other causes of liver disease.

PwCF, including those with CFHBI and aCFLD may also have unrelated causes of acute and chronic liver disease. Other causes of liver disease can mimic CFHBI and aCFLD. In addition, modifier genes, such as the *SERPINA Z* allele (a cause of alpha-1 antitrypsin

deficiency), can negatively impact the clinical course of hepatic injury in CF.<sup>[44]</sup> The growing epidemic of obesity and metabolic syndrome associated with fatty liver disease has implications for all PwCF since it can be concurrent with CF, particularly in adults.<sup>[45]</sup> Given this, all PwCF found to have CFHBI should undergo a standardized evaluation for additional causes of liver abnormalities. This should include testing for chronic viral hepatitis (eg, chronic hepatitis B, C, and E if immunosuppressed or other risk factors present), cholestatic and autoimmune liver disease, alcohol-associated and NAFLD, alpha-1 antitrypsin deficiency, Wilson disease, nonhepatic disorders such as celiac disease, and drug-induced hepatotoxicity from CFTR modulators and other forms of pharmacotherapy.<sup>[1,46–50]</sup> Further testing can be tailored to individualized risk factors. Depending on the availability of local expertise and familiarity with the care of PwCF, a dedicated evaluation through referral to a gastroenterologist or hepatologist may be prudent.

S6. The CFF recommends that all PwCF who have the cholestatic liver test (Direct Bilirubin, GGT, and/or alkaline phosphatase) elevation, abdominal pain consistent with a biliary cause, and inconclusive abdominal US should undergo magnetic resonance cholangiopancreatography to detect hepatolithiasis, choledocholithiasis, biliary strictures, and/or biliary obstruction.

PwCF are at risk for biliary complications, which include the development of symptomatic large-duct biliary strictures, gallbladder disease, and intra/extrahepatic biliary lithiasis leading to obstruction. This can manifest clinically with acute cholangitis in the setting of right upper quadrant pain, jaundice, and/or fever and chills. Although abdominal US imaging has excellent diagnostic accuracy for gallbladder pathology, it is less accurate for the detection of intrahepatic and extrahepatic biliary tree abnormalities. Magnetic resonance cholangiopancreatography imaging is superior to US for assessment of the biliary tree and has been well-studied in chronic biliary diseases<sup>[51–53]</sup> and in small case series of PwCF.<sup>[54–58]</sup> Therefore, in PwCF who have findings that are concerning for biliary disease without an adequate explanation by US imaging, magnetic resonance cholangiopancreatography should be obtained to help guide therapeutic decisions.

## Monitoring recommendations

M1. The CFF recommends that in PwCF and liver involvement, a liver-specific physical examination be performed at least annually and at each in-person visit to monitor for the progression of disease.

The most common physical exam finding of aCFLD is an enlarged firm liver with or without splenomegaly.<sup>[1]</sup> Other findings of progressive liver disease, such as ascites, are typically absent until the late stages of aCFLD. A composite score including liver and spleen size on physical exam, in addition to ALT and GGT values had a greater sensitivity and specificity (85% and 82%, respectively) for predicting microscopic liver injury compared to hepatomegaly alone.<sup>[24]</sup> As such, a more nuanced physical exam of the liver including size (enlarged vs. normal), texture (smooth vs. nodular), and firmness is recommended. Despite low specificity, a liver-specific physical exam is noninvasive, easily repeatable, requires minimal additional time, and no additional cost, thus yielding a favorable cost-to-benefit ratio. We recommend liver-specific physical exam for persons with CFHBI and aCFLD at each in-person visit, at a minimum of once per year.

M2. The CFF recommends that for PwCF and hepatobiliary involvement at least one liver fibrosis index be calculated and followed at least annually.

Liver fibrosis indices used in the assessment of other liver diseases have been applied to the detection of CFHBI and progression to aCFLD. Elevations of these indices have been associated with nodular liver appearance on US, the presence of portal hypertension and varices, and more advanced liver fibrosis in CF. Studies of APRI, fibrosis-4, Forns index, and GPR found that each of these indices had high sensitivity and low specificity for the detection of liver fibrosis.<sup>[18,20,34,59]</sup> The current recommendation is to choose at least 1 liver fibrosis index and follow results annually to aid in both detection and progression of liver CFHBI and aCFLD. The components of APRI, fibrosis-4, Forns index, and GPR are captured in the recommended annual labs for all PwCF. As application of these liver fibrosis indices is relatively new in CF, there is some variation in the literature of normal values. [Table 1](#) summarizes the literature for APRI and GPR.

M3. The CFF recommends for PwCF and hepatobiliary involvement an abdominal US be performed at least every 2 years to monitor for the progression of disease.

US is a noninvasive technique that is safe and low risk for all patients with CF. This technique is almost universally available in all CF centers worldwide and is useful in discriminating hepatobiliary involvement and grossly monitoring the progression of liver disease over time. No adverse effects on quality of life have been identified in using US to diagnose presymptomatic liver disease in children with CF.<sup>[60]</sup> While discrepancies in interpretations have been reported between centers,

sequential studies at a single center read by similarly experienced radiologists can provide important longitudinal information regarding hepatobiliary involvement in CF. For this reason, we recommend that individuals with CFHBI undergo an abdominal US (including liver and spleen) at least every 2 years to detect new onset or evolving heterogeneity of the liver parenchyma, nodularity, hepatomegaly, splenomegaly, reversal of flow in the portal venous system, or ascites. Reversal of portal venous blood flow can be detected by routine US color flow measurements. Separate Doppler measurements may not be necessary but can be considered on an individual basis based on local radiologist preferences for the use of Doppler to detect portal venous flow. If centers use SWE for elastography, then US tests may be done on an annual basis.

M4. The CFF recommends that PwCF and hepatobiliary involvement or advanced liver disease undergo evaluation of liver stiffness with elastography at least annually, if available, to monitor for the progression of disease.

Multiple studies have shown that TE and SWE can not only detect CFHBI but also be used to follow the progression of stiffness over time to monitor the progression of disease in both children and adults.<sup>[8,9,61]</sup> For both modalities, the highest accuracy is achieved when comparing an individual's elastography values over time using the same modality. Although MRI with elastography provides richer information about variation of stiffness in different regions of the liver, there is currently insufficient evidence to recommend MRI with elastography over the more accessible and economical TE or SWE for monitoring. Given the greater availability of TE and SWE for both children and adults, and evidence of reproducibility and detection of change over time, it is recommended that all persons with CFHBI have either TE or SWE performed annually. As much as possible, annual measurement should be performed using the same technology (ie, either TE or SWE) to allow for year-over-year comparisons.

M5. The CFF recommends that persons with CFHBI or advanced liver disease receive consultation with a pharmacist with experience in CF and hepatobiliary disease to identify high-risk medications, polypharmacy, therapy modifications, and risk based on their hepatobiliary disease every 6 months, unless there have been no medication changes, to improve morbidity and mortality.

Polypharmacy is common in CF. Use of antibiotics ranges from short courses to complicated long-term regimens against nontuberculous mycobacteria and multidrug-resistant organisms colonizing the respiratory tract. In addition, PwCF commonly have other medical problems that require additional medications. CFTR modulators, which are metabolized by the cytochrome P450 system, have also entered the daily regimen of PwCF with further concerns for drug-drug interactions.<sup>[62]</sup>



Other important considerations include consumption of supplements (eg, herbals) and alcohol, which can impact liver metabolism and function. Multiple studies have shown that involvement of a pharmacist in inpatient and outpatient settings results in improved outcomes for the treatment of infections, decreased length of hospitalizations, decrease in medication errors, and improved safety for PwCF.<sup>[63–66]</sup> Given that many medications and supplements are metabolized through the liver, PwCF with elevated liver enzymes, CFHBI, aCFLD, and post-transplant are at risk for complicated drug-drug interactions. Preventative measures, such as avoiding herbal supplements, minimizing or abstaining from alcohol, and obtaining hepatitis A and B vaccinations, should be discussed.

M6. The CFF recommends that PwCF and advanced liver disease undergo liver-specific physical examination and measurement of AST, ALT, GGT, alkaline phosphatase, conjugated (or direct) bilirubin, albumin, platelets, and international normalized ratio (INR) at least every 6 months to detect progression of liver disease.

Elevations of AST and ALT are seen during hepatocellular inflammation and of GGT during cholestasis or biliary inflammation. GGT elevation has been associated with the presence of CFHBI or progression to aCFLD.<sup>[3,11,15,16]</sup> Elevated conjugated bilirubin may occur in aCFLD with profound hepatocellular destruction. Albumin and INR are markers of liver synthetic function. Previous studies have not specifically evaluated the utility of monitoring albumin and INR to detect progression of hepatobiliary disease in CF. However, in the presence of aCFLD, understanding liver synthetic function is essential in evaluating progression of liver disease and risk for comorbidities such as ascites or variceal bleeding. Low or decreasing platelets over time may indicate development/progression of portal hypertension, regardless of the absolute value.<sup>[37,67]</sup> aCFLD is generally a slowly progressive disease for which twice-yearly evaluation of inflammation, cholestasis, liver function, and progression of portal hypertension will allow earlier recognition of changes in those PwCF who have already been identified to have aCFLD.

M7. The CFF recommends that PwCF and advanced liver disease receive a nutritional assessment for malnutrition and liver-specific macronutrient and micronutrient deficiencies every 6 months by a dietitian experienced in CF. When abnormalities are identified, a treatment plan and monitoring of nutritional rehabilitation should be developed.

There is an increased nutritional burden for persons with aCFLD.<sup>[1]</sup> There is evidence of increased fat malabsorption due to decreased biliary function, increased catabolism due to inflammation within the biliary tree and liver, and increased rates of CF-related diabetes (CFRD) and metabolic bone disease.<sup>[1]</sup> Decreased volume and flow of bile, as well as variable bile composition, affect the absorption of fats and fat-

soluble vitamins. Essential fatty acid deficiency has been shown to persist in persons with aCFLD despite adequate nutrition therapy.<sup>[68,69]</sup> Annual nutritional evaluation by a dietitian with CF-specific expertise is presently included in the CFF guidelines.<sup>[70,71]</sup> It is recommended that nutritional evaluation be expanded to at least twice a year by a dietitian with expertise in both CF and advanced liver disease. If nutritional abnormalities are noted during the evaluation, a comprehensive nutritional rehabilitation plan should be developed and implemented. Follow-up should involve increased frequency of reassessments and proactive adjustments with the overall goal of improving nutritional status.

M8. The CFF recommends, for PwCF and advanced liver disease, beginning CFRD screening at the diagnosis of advanced liver disease, even if earlier than age 10 and then annually thereafter, to provide early diagnosis and treatment of CFRD (using methodologies described in the most current CFRD Guidelines).

The liver plays an integral role in glucose metabolism. There are limited studies specifically evaluating oral glucose tolerance testing in the setting of aCFLD, but existing data indicate impaired glycemia, insulin secretion, insulin sensitivity, and clearance.<sup>[72]</sup> An increased incidence of CFRD in patients with aCFLD as compared to those without liver disease has been described.<sup>[1,73]</sup> An increased incidence of CFRD was found in a cohort of 88 children with CF with baseline heterogeneity or cirrhosis on US.<sup>[74]</sup> A case-controlled cohort study from Australia found an OR of 2.61 (95% CI: 1.55–4.47) for CFRD in those with aCFLD compared to no CFHBI.<sup>[75]</sup> A positive association between ALT elevation and insulin resistance was identified in a cross-sectional study of 273 adults with CF screened for CFRD.<sup>[76]</sup> Development of CFRD requires additional monitoring for the prevention of nutritional instability. Thus, it is important to screen children <10 years old with aCFLD for insulin resistance and CFRD on aCFLD diagnosis.

M9. The CFF recommends that PwCF and advanced liver disease receive multidisciplinary care from pulmonology, gastroenterology/hepatology, endocrinology and when appropriate, a transplant center to optimize liver outcomes.

While there is limited CF-specific literature, there is ample literature in other liver and lung diseases emphasizing the importance of multidisciplinary care in improving outcomes, especially when transplant is being considered.<sup>[77,78]</sup> This can be especially important when considering liver alone or combined multi-organ transplants.<sup>[79]</sup> The CFF guidelines for lung transplant developed in 2019 emphasize that communication between the primary CF center and the lung transplant team is crucial in providing optimal care for persons with advanced lung disease necessitating transplantation. As noted in recommendations M7 and M8, aCFLD is often complicated by nutritional challenges and derangements in glucose metabolism, which will impact

both pretransplant and post-transplant considerations. A multidisciplinary approach is critical to assuring a patient is stable for transplant and thrives after receiving a transplant. This should include not only medical providers, but social workers, psychologists, physical therapists, and dietitians who are instrumental in addressing the psychosocial and nutritional challenges associated with chronic disease and the added burden of transplant.

M10a. The CFF recommends that adults with CF and advanced liver disease with esophageal varices be managed according to the relevant most current published guidelines, such as those from the American Association for the Study of Liver Diseases or the Baveno group.

M10b. The CFF cannot provide a recommendation for or against endoscopic variceal surveillance in children with advanced liver disease due to insufficient evidence.

A large retrospective review of the CFF registry data from 2003 to 2012, with a mean age of 18.1 years, found 3.6% were documented to have cirrhosis.<sup>[80]</sup> Of those, the 10-year cumulative risk for variceal bleed was 6.6%, with the mean age of first variceal bleed being 18.8 years (range 0.89–45.14).<sup>[80]</sup> In a different study, patients with CF with variceal bleeding were 5 times more likely to undergo liver transplantation, but all-cause mortality was not impacted by variceal bleeding.<sup>[80]</sup> Screening for varices is performed by esophagogastroduodenoscopy (EGD), which allows for the identification and characterization of varices and therapeutic intervention.<sup>[81]</sup> Based on current Baveno consensus recommendations, in adults with compensated cirrhosis, the initial screening endoscopy may be deferred if the platelet count is  $\geq 150,000$  and the liver stiffness, as measured by TE, is  $\leq 20$  kPa.<sup>[81–84]</sup> Although these criteria have not been studied in aCFLD, it is reasonable to follow the most current consensus guidelines for EGD surveillance in adults; initiating EGD surveillance when platelet and/or liver stiffness thresholds are crossed and performing surveillance every 1–2 years thereafter.<sup>[82]</sup> Endoscopic screening and prophylaxis of variceal bleeding have not been adequately studied in children with aCFLD or other pediatric liver diseases, and therefore, evidence-based recommendation cannot be made for or against endoscopic surveillance in children with aCFLD at this time. As liver guidelines for children continue to evolve, recommendations for surveillance endoscopy in children with aCFLD should be aligned with recommendations made for all children with advanced liver disease and hypersplenism.

M11a. The CFF recommends that all children with CF with cirrhosis or suspected cirrhosis are screened annually for HCC with abdominal US and serum alpha-fetoprotein (AFP).

M11b. The CFF recommends that all adults with CF with cirrhosis or suspected cirrhosis are screened for

HCC using the most current screening guidelines as per the American Association for the Study of Liver Diseases or European Association for the Study of Liver Disease.

While the incidence of HCC in CF cirrhosis is unknown, multiple case reports demonstrate that HCC is a complication of CF and cirrhosis.<sup>[85–87]</sup> It can be speculated that with increased survival of PwCF, the duration of cirrhosis in patients with aCFLD will increase, resulting in a rise in HCC in CF. Based on this consideration and current guidelines, we recommend that patients with CF and cirrhosis, or suspected cirrhosis, undergo liver US twice a year for adults and annually for children with yearly serum concentration measurements of serum AFP for all.<sup>[88,89]</sup> AFP is considered a biomarker for HCC and has been used in multiple liver diseases to detect HCC once the presence of cirrhosis has been established. However, HCC can occur even in the presence of normal AFP so HCC monitoring should also include abdominal US.

## Treatment

T1. The CFF recommends against the routine use of ursodeoxycholic acid (UDCA) to prevent advanced liver disease in all PwCF.

Several small randomized controlled trials<sup>[90–94]</sup> and multiple cohort studies<sup>[95–98]</sup> in PwCF liver disease (based on prior definitions) have shown improvements in liver enzymes (AST, ALT, GGT) with UDCA treatment duration between 6 months and 2 years. However, no studies have shown that UDCA prevents the development of aCFLD or liver transplant. In 2017, a Cochrane Review concluded that there was insufficient evidence to justify its routine use in CF.<sup>[99]</sup> Since then, one longitudinal cohort study ( $n = 3417$ ), with up to 6 years follow-up, showed an association of UDCA on survival in persons without cirrhosis, but UDCA was also associated with increased OR of having cirrhosis (2.87, CI: 1.55–5.32,  $p = 0.001$ ).<sup>[100]</sup> Two recent large cohort studies ( $n = 1591$  and 3328) found no difference in the incidence of aCFLD for those treated with UDCA compared to those not treated.<sup>[101,102]</sup> Because the data do not support that UDCA prevents aCFLD, we do not recommend its routine use to prevent aCFLD. There are currently no data on liver outcomes in PwCF that discontinue UDCA. As such, CF care providers should use discretion regarding indications for continuation or discontinuation of UDCA treatment for those presently on UDCA.

T2a. Efficacy: The CFLD Guidelines Committee cannot recommend for or against the use of CFTR modulator treatment to improve liver outcomes in PwCF and hepatobiliary involvement or advanced liver disease when age-appropriate, genotype-specific modulator therapy is available due to insufficient evidence.

T2b. Safety: The CFLD Guidelines Committee recommends, based on expert opinion, the use of

CFTR modulator treatment in PwCF and CFHBI in the setting of close monitoring by a CF gastroenterologist and/or hepatologist and pharmacist because the benefits to CF lung disease outweigh the liver-related risk.

T2c. Safety: The CFLD Guidelines Committee cannot recommend for or against the use of CFTR modulators in PwCF with advanced liver disease and portal hypertension without decompensation due to insufficient evidence.

T2d. Safety: The CFLD Guidelines Committee recommends against CFTR modulator use in PwCF and decompensated aCFLD, as determined by a consultant Hepatologist based on thresholds such as sustained  $\text{INR} > 1.5$ , abnormal direct bilirubin, low albumin, refractory ascites, or encephalopathy.

T2e. Transplant: The CFLD Guidelines Committee recommends, based on expert opinion, for CFTR modulator treatment in PwCF who have received a liver transplant because the benefits to CF lung disease outweigh the liver-related risk. There should be close monitoring and collaboration with the transplant team/pharmacist in these individuals as drug-drug interactions need to be noted and monitored.

There is a lack of controlled prospective data on liver-associated outcomes of CFTR modulator treatment in persons with CFHBI, aCFLD, or those who have undergone liver transplantation. Most clinical trials excluded PwCF with a history of liver disease, such as cirrhosis with portal hypertension or solid organ transplantation. These recommendations were made by the committee based on currently available data and expert opinion with respect to safety and efficacy in line with recommendations from drug manufacturers and government regulatory bodies.

Currently, nearly all studies examining the effects of CFTR modulators on liver health are relatively small, single-center retrospective studies (lumacaftor/ivacaftor: 3 studies, cumulative  $n = 124$ ; elexacaftor/tezacaftor/ivacaftor: 4 studies, cumulative  $n = 57$ ).<sup>[103–108]</sup> Collectively, the data suggest that lumacaftor/ivacaftor may improve liver enzymes, APRI, and GPR.<sup>[105–107]</sup> One large retrospective review of a US private insurance claims database examined 955 patients with CF on CFTR modulators between 2012 and 2017 and found decreased cirrhosis in those on modulators.<sup>[109]</sup> Potential effects of elexacaftor/tezacaftor/ivacaftor are less clear, with one study showing decreased liver stiffness, but another showing no change, or even increased liver stiffness in PwCF on elexacaftor/tezacaftor/ivacaftor.<sup>[103,104]</sup> Some evidence suggests improvements in hepatic steatosis.<sup>[108,110]</sup> Improvements in cholesterol biosynthesis and bile acid homeostasis have also been reported.<sup>[107,111]</sup> While data on CFTR modulators and liver health are increasing, to date there is insufficient evidence to make a recommendation on its use to improve liver outcomes in PwCF and hepatobiliary involvement.

There have been isolated reports of severe toxicity.<sup>[112,113]</sup> Clinical trials of CFTR modulators reported transaminase elevations  $> 3x$  upper limit of normal in about 5% of CF subjects; however, very few required treatment discontinuation.<sup>[114–117]</sup> Treatment interruption with rechallenge is sufficient in most cases.

Additional studies showed marked improvements in forced expiratory volume in one second ( $\text{FEV}_{1}$ ), disease-specific quality of life questionnaires (eg, cystic fibrosis questionnaire revised), pulmonary exacerbations, rate of lung function decline, hospitalizations, and nutritional status that were demonstrated in multiple clinical trials.<sup>[118,119]</sup> Based on expert opinion, in persons with CFHBI or aCFLD, the benefits of CFTR modulator treatment may outweigh potential liver-related risk, and close monitoring should be implemented. Specifically, for those with liver transplant, drug-drug interactions need to be noted and carefully monitored to prevent rejection and maintain the health of the transplanted liver. Small case series note improvements in quality of life, body mass index, and lung function, similar to PwCF without a liver transplant.<sup>[120,121]</sup>

T3. The CFF recommends cholecystectomy for all CF persons with symptomatic gallbladder disease and other interventions [such as endoscopic retrograde cholangiopancreatography (ERCP)] for all CF persons with symptomatic biliary tract disease.

Biliary tract abnormalities can be present at birth, at diagnosis, or subsequently develop in infants and adults.<sup>[122–125]</sup> Biliary colic may occur in a small number of PwCF on initiation of CFTR modulator therapies.<sup>[126]</sup> Cholecystectomy is generally safe, with conservative preoperative and postoperative pulmonary management.<sup>[127,128]</sup> Laparoscopic cholecystectomy is preferred over the open approach.<sup>[2,129,130]</sup> Following the standard of care in non-CF persons, therapeutic ERCP, percutaneous transhepatic cholangiography, or intraoperative cholangiogram should be performed with cholecystectomy in the setting of documented or suspected choledocholithiasis.<sup>[2,58]</sup>

T4. The CFF cannot recommend for or against the use of nonselective beta-blocker treatment for the prevention or treatment of variceal bleeding in PwCF and advanced liver disease with portal hypertension due to insufficient evidence.

In adults with portal hypertension and gastroesophageal varices, nonselective beta-blocker treatment is recommended for both primary and secondary prophylaxis of variceal bleeding.<sup>[81,131]</sup> Randomized clinical trials assessing the benefits or harms of nonselective beta-blocker versus placebo or no intervention for primary prophylaxis of esophageal variceal bleeding are lacking for children with chronic liver disease and in children or adults with aCFLD.<sup>[132]</sup> Although nonselective beta-blocker may have potential adverse effects on pulmonary disease, no studies assessing the worsening of CF lung disease were identified.

T5a. The CFF cannot recommend for or against primary variceal prophylaxis for children with CF and advanced liver disease with portal hypertension and varices due to insufficient evidence.

T5b. The CFF recommends that for children with CF and advanced liver disease with portal hypertension, varices, and prior variceal hemorrhage, current guidelines for secondary prophylaxis be followed in consultation with a pulmonologist and anesthesiologist with expertise in CF.

T5c. The CFF recommends that adults with CF and advanced liver disease and portal hypertension (with or without prior variceal hemorrhage) should undergo primary or secondary prophylaxis according to current guidelines in consultation with a pulmonologist and anesthesiologist with expertise in CF.

Existing literature in non-CF liver disease supports the use of endoscopic variceal ligation (EVL), sclerotherapy, and nonselective beta-blockers as primary prophylaxis in adults with portal hypertension at high risk for variceal bleeding and for management of variceal hemorrhage.<sup>[81,131]</sup> However, in the pediatric population, there are few studies<sup>[133]</sup> and no guidelines to inform management. Nevertheless, EVL and sclerotherapy are preferred methods for the treatment of variceal hemorrhage and the prevention of rebleeding. Anatomic and size limitations may favor sclerotherapy for small children in whom the EVL equipment cannot be used. There is insufficient evidence regarding the safety and efficacy of the use of nonselective beta-blockers in children as noted.

There is a notable lack of data in both adults and children with aCFLD regarding primary or secondary variceal prophylaxis. The preferred intervention is EGD with EVL or injection sclerotherapy if limitations require it. Procedure-related risks include bleeding and complications of general anesthesia, particularly in the setting of advanced lung disease.

T6a. The CFF recommends that for PwCF and cirrhotic or noncirrhotic portal hypertension with  $\text{INR} \leq 1.5$ , normal direct bilirubin and albumin, no encephalopathy and no refractory ascites, portosystemic shunt, or liver transplantation be considered as long-term treatment.

T6b. The CFF recommends that for PwCF and cirrhotic or noncirrhotic portal hypertension with  $\text{INR} > 1.5$ , abnormal direct bilirubin, low albumin, refractory ascites or encephalopathy, or liver transplantation be considered as the appropriate long-term treatment. Portosystemic shunt placement may be a bridge to transplantation for management of intractable variceal bleeding.

Overall, there is a lack of evidence in CF persons comparing portosystemic shunt to liver transplant outcomes. There are no data to inform on which type of shunts should be performed. CFF registry data show evidence of hepatic decompensation in some with aCFLD and portal hypertension.<sup>[80,134]</sup> Liver transplantation data for children and adults with CF show lower adjusted survival rates than other chronic liver diseases

but are still acceptable.<sup>[135,136]</sup> There are limited long-term portosystemic shunt data. Short-term data suggest reduced GI bleeding with a low incidence of HE in aCFLD without decompensation and that portosystemic shunt serves appropriately either as a stand-alone long-term treatment or a bridge to liver transplantation in individuals experiencing complications of portal hypertension.<sup>[27,137,138]</sup>

Liver transplantation in selected individuals has not been shown to be a detriment to underlying lung function.<sup>[139]</sup> Improvements in nutritional status and quality of life were noted in liver transplant recipients when compared to nontransplanted PwCF.<sup>[140,141]</sup> There were lower 5-year survival rates in liver transplant recipients that were significantly higher in nontransplanted PwCF.<sup>[79,141]</sup> The need for liver transplantation in the era of CFTR modulator treatment needs further study. Highly effective CFTR modulator treatment has the potential to delay liver transplantation and warrants further study.

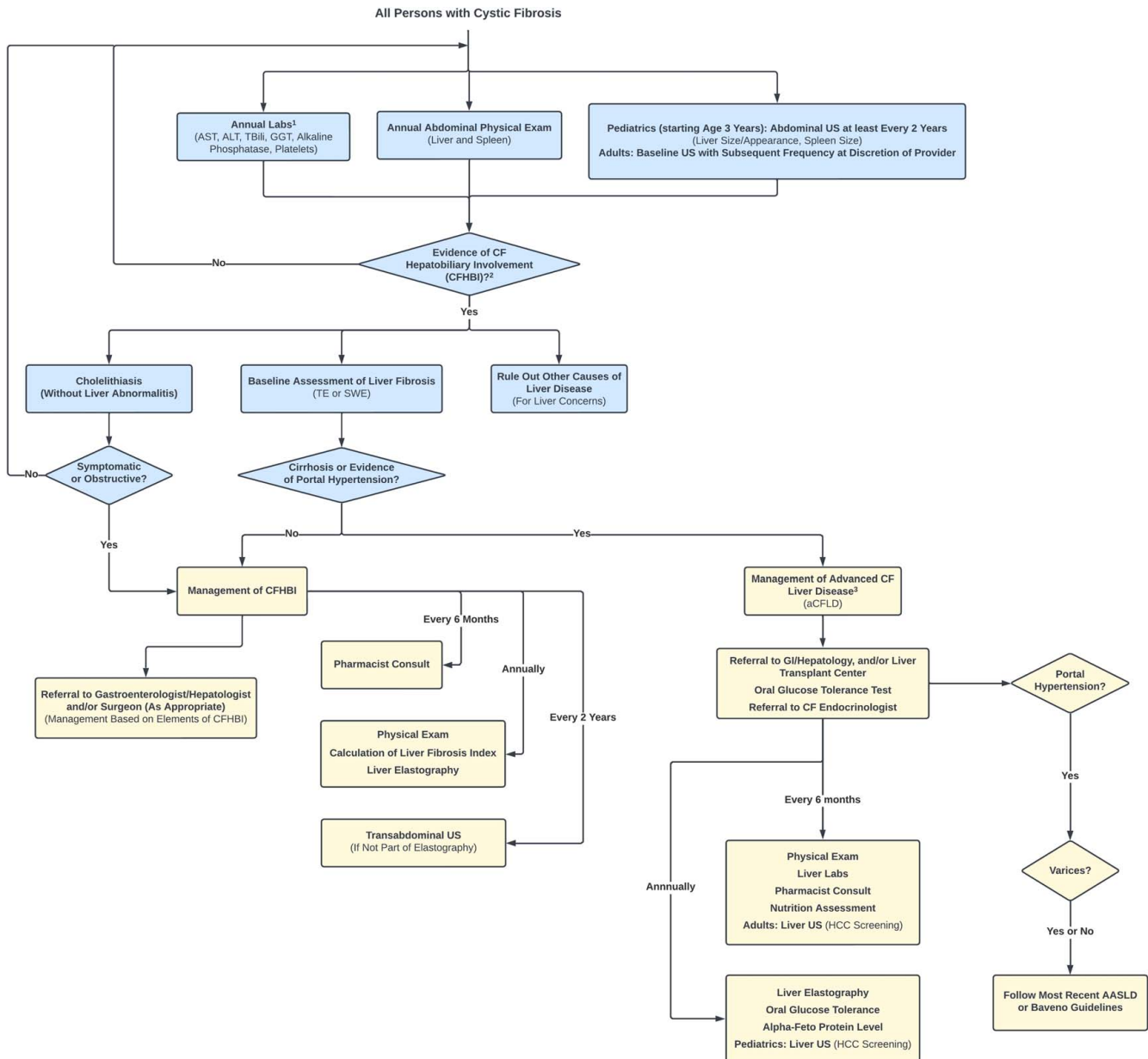
T7. The CFF recommends that for PwCF and advanced liver disease and advanced lung disease that may be considered for lung or liver transplant, combined lung-liver transplantation be considered to optimize long-term treatments.

Lung-only and liver-only transplantations are proven interventions for PwCF with lung or liver decompensation.<sup>[134,142]</sup> As the CF population ages, there may be a higher frequency of PwCF presenting with both advanced lung and liver disease. Persons with aCFLD requiring liver transplantation with advanced lung disease ( $\text{FEV}_1 < 40\%$ ) would not currently be listed for liver-only transplantation at most centers because of the risk of advanced lung disease complications during and after transplantation.<sup>[143]</sup> There have been reported declines in lung function following liver-only transplantation.<sup>[139]</sup> Likewise, PwCF and advanced lung disease requiring lung transplantation with aCFLD would not currently be listed for lung-only transplantation at most centers because of the risks associated with aCFLD post-lung transplant.

There are insufficient data on opportunistic infection, lung function, glycemic control, or quality of life following combined lung-liver transplantation. Mortality and morbidity are similar with combined lung-liver transplantation and lung-only or liver-only transplantation.<sup>[144-146]</sup> There is higher post-transplant morbidity associated with higher lung allocation scores ( $> 50$ ).<sup>[147]</sup> Lung allograft rejection appears to be lower in combined lung-liver transplantation compared to lung transplantation alone.<sup>[148,149]</sup> More studies are needed to determine when combined lung-liver transplantation should be considered over liver transplantation alone.

All recommendation statements are summarized in [Table 2](#), and a pathway illustrating screening and monitoring recommendations is shown in [Figure 1](#).





**FIGURE 1** Pathway summarizing screening and monitoring recommendations. Flow diagram summarizing hepatobiliary disease screening and monitoring recommendations, as outlined within the manuscript. Blue color indicates screening, and yellow color indicates monitoring. <sup>1</sup>Should be performed at the time of clinical stability. <sup>2</sup>CFHBI includes elevation in liver enzymes above age-appropriate values for > 3–6 months, abnormal liver/spleen exam, and/or abnormal US findings. <sup>3</sup>Advanced CF Liver Disease (aCFLD) refers to having one (or more) of the following: nodular liver, advanced fibrosis (F4), multilobular cirrhosis with or without portal hypertension, or noncirrhotic portal hypertension. Abbreviations: aCFLD, advanced CF liver disease; ALT, alanine aminotransferase; AST, aspartate aminotransferase; CF, cystic fibrosis; CFHBI, CF hepatobiliary involvement; GGT, gamma-glutamyl transferase; SWE, shear-wave elastography; TE, transient elastography; US, ultrasound.

## No consensus

There was not sufficient consensus (< 80% agreement) to recommend a diagnostic liver biopsy in PwCF who are found to have evidence of portal hypertension (Table 3). Since the 1999 guidelines, liver biopsies in CF have generally fallen out of favor given their low specificity in detecting patchy disease.<sup>[18]</sup> However, recent studies,

including analysis of liver explants following liver transplantation, highlight the growing recognition that a significant proportion of portal hypertension in CF may be due to noncirrhotic nodular regenerative hyperplasia.<sup>[150–154]</sup> The cause of this finding in the context of CF is unclear, but histological analysis suggests a vascular abnormality including obliterative portal venopathy. Despite the risk of ascites and variceal



hemorrhage, the clinical course of noncirrhotic portal hypertension usually differs from cirrhotic portal hypertension, given the preserved liver function, which might obviate the need for liver transplantation. For this reason, differentiation between cirrhosis and nodular regenerative hyperplasia can provide valuable clinical information. However, liver biopsy with or without portal pressure measurement is invasive and can be associated with morbidity, and rarely mortality, carrying additional risk in PwCF with compromised lung function. Furthermore, the threshold for determining findings of portal hypertension by examination, calculated liver indices, noninvasive imaging, and standard US imaging is unclear, raising the possibility of unnecessary liver biopsies in some PwCF. Therefore, further study of the frequency of noncirrhotic portal hypertension, clinical thresholds for obtaining histologic assessment, and the impact of this testing on clinical care in CF is needed before routine recommendation for biopsy can be made. Multidisciplinary consultation (including gastroenterologists/hepatologists) on this matter is encouraged.

## CONCLUSIONS

The current, updated CFF recommendations for hepatobiliary complications in PwCF build on the foundation that the 1999 guidelines set but compiles data generated over the last 20+ years to add more granularity and clarity in how we diagnose, monitor, and treat patients with CFHBI and aCFLD. As can easily be appreciated, there remain topics of great interest to our committee and the greater CF community that we cannot yet answer. These areas are ripe for additional research, and we urge researchers and funding agencies to consider these as areas of priority. The medical burden experienced by PwCF is tremendous. We readily recognize that our recommendations may add additional medical appointments and tests to what may be currently done at individual centers, and this subject was discussed during the evaluation of every recommendation. A strength of our committee is its multidisciplinary composition, with pulmonologists, gastroenterologists/hepatologists, endocrinologists, a pharmacist, an individual with CF, and a family member of PwCF. The recommendations integrated inputs from all these individuals, and the final recommendations are an attempt to balance medical burden with improving hepatobiliary outcomes and overall morbidity and mortality of PwCF. As we continue to gather more data in these areas (and in some yet to be defined), we are eager to revisit the recommendations we currently set forth. As examples, we anticipate that the increase in CFTR modulator use and the development and implementation of antifibrotics and other medical interventions for persons with CFHBI and aCFLD may alter the course of liver disease in CF. Yet, we are

confident the guidelines presented here will direct providers in ways that will positively transform the hepatobiliary care of PwCF now.

## AUTHOR CONTRIBUTIONS

Zachary M. Sellers and Michael R. Narkewicz: conceptualization, methodology, writing – original draft, review and editing, supervision, project administration; David N. Assis, Shruti M. Paranjape, and Meghana Sathe: investigation, data curation, writing – original draft, review and editing, supervision; Frank Bodewes, Melissa Bowen, Marco Cipolli, Dominique Debray, Nicole Green, Kara S. Hughan, William R. Hunt, Julio Leey, Simon C. Ling, Giuseppe Morelli, Daniel Peckham, Rebeca S. Pettit, Alexander Philbrick, Janis Stoll, Kay Vavrina, Stacy Allen, and Tara Goodwin: investigation, data curation, writing – review and editing; Sarah E. Hempstead: methodology, project administration, writing – original draft, review and editing.

## ACKNOWLEDGMENT

The authors thank Elise Wong for providing project management and editorial support, and Ali Sue Patterson for assisting with the graphical abstract. The authors also thank the CF care teams and patients and the families who participated in our introductory survey and public comment.

## CONFLICTS OF INTEREST

Zachary M. Sellers Consults for AbbVie, Anionix, Renexxion, and Vertex. He received grants from the Cystic Fibrosis Foundation. Meghana Sathe consults for Nestle received grants from Anagram Therapeutics and the Cystic Fibrosis Foundation. She has other interests in Alcresta Therapeutics. Dominique Debray consults and received grants from Vertex. She consults for Alexion, Mirum, Orphan, and Univar. Simon C. Ling consults and received grants from AbbVie. He consults for Medison and Mirium. Daniel Peckham is on the speakers' bureau for Vertex. Kay Vavrina is on the speakers' bureau for AbbVie and Alcresta. Michael R. Narkewicz consults for Vertex He received grants from AbbVie, the Cystic Fibrosis Foundation, and Gilead. The remaining authors have no conflicts to report.

## ORCID

Zachary M. Sellers  <https://orcid.org/0000-0001-5352-7760>

## REFERENCES

1. Leung DH, Narkewicz MR. Cystic fibrosis-related cirrhosis. *J Cyst Fibros*. 2017;16(suppl 2):S50–61.
2. Sokol RJ, Durie PR. Recommendations for management of liver and biliary tract disease in cystic fibrosis. Cystic Fibrosis Foundation Hepatobiliary Disease Consensus Group. *J Pediatr Gastroenterol Nutr*. 1999;28(suppl 1):S1–13.

3. Woodruff SA, Sontag MK, Accurso FJ, Sokol RJ, Narkewicz MR. Prevalence of elevated liver enzymes in children with cystic fibrosis diagnosed by newborn screen. *J Cyst Fibros*. 2017;16:139–45.
4. Banjar H, AbdulAziz N, Khader J, Ghomraoui F, Alansari A, Al-Hoshan A, et al. Liver disease in cystic fibrosis patients in a tertiary care center in Saudi Arabia. *Int J Pediatr Adolesc Med*. 2022;9:78–82.
5. Koh C, Sakiani S, Surana P, Zhao X, Eccleston J, Kleiner DE, et al. Adult-onset cystic fibrosis liver disease: Diagnosis and characterization of an underappreciated entity. *Hepatology*. 2017;66:591–601.
6. Sadler MD, Crotty P, Fatovich L, Wilson S, Rabin HR, Myers RP. Noninvasive methods, including transient elastography, for the detection of liver disease in adults with cystic fibrosis. *Can J Gastroenterol Hepatol*. 2015;29:139–44.
7. Patriquin H, Lenaerts C, Smith L, Perreault G, Grignon A, Filiatrault D, et al. Liver disease in children with cystic fibrosis: US-biochemical comparison in 195 patients. *Radiology*. 1999;211:229–32.
8. Klotter V, Gunchick C, Siemers E, Rath T, Hudel H, Naehrlich L, et al. Assessment of pathologic increase in liver stiffness enables earlier diagnosis of CFLD: Results from a prospective longitudinal cohort study. *PLoS One*. 2017;12:e0178784.
9. Gominon AL, Frison E, Hiriart JB, Vergniol J, Clouzeau H, Enaud R, et al. Assessment of liver disease progression in cystic fibrosis using transient elastography. *J Pediatr Gastroenterol Nutr*. 2018;66:455–60.
10. Udell JA, Wang CS, Tinmouth J, FitzGerald JM, Ayas NT, Simel DL, et al. Does this patient with liver disease have cirrhosis? *JAMA*. 2012;307:832–42.
11. Siegel MJ, Freeman AJ, Ye W, Palermo JJ, Molleston JP, Paranjape SM, et al. Heterogeneous liver on research ultrasound identifies children with cystic fibrosis at high risk of advanced liver disease: Interim results of a prospective observational case-controlled study. *J Pediatr*. 2020;219:62–9 e4.
12. Colantonio DA, Kyriakopoulou L, Chan MK, Daly CH, Brinc D, Venner AA, et al. Closing the gaps in pediatric laboratory reference intervals: A CALIPER database of 40 biochemical markers in a healthy and multiethnic population of children. *Clin Chem*. 2012;58:854–68.
13. Bussler S, Vogel M, Pietzner D, Harms K, Buzek T, Penke M, et al. New pediatric percentiles of liver enzyme serum levels (alanine aminotransferase, aspartate aminotransferase, gamma-glutamyltransferase): Effects of age, sex, body mass index, and pubertal stage. *Hepatology*. 2018;68:1319–30.
14. Alexopoulou A, Pouriki S, Vasilieva L, Alexopoulos T, Filaditaki V, Gioka M, et al. Evaluation of noninvasive markers for the diagnosis of cystic fibrosis liver disease. *Scand J Gastroenterol*. 2018;53:1547–52.
15. Bodewes FAJA, van der Doef HPJ, Houwen RHJ, Verkade HJ. Increase of serum gamma-glutamyltransferase associated with development of cirrhotic cystic fibrosis liver disease. *J Pediatr Gastroenterol Nutr*. 2015;61:113–8.
16. Cipolli M, Fethney J, Waters D, Zanolla L, Meneghelli I, Dutt S, et al. Occurrence, outcomes and predictors of portal hypertension in cystic fibrosis: A longitudinal prospective birth cohort study. *J Cyst Fibros*. 2020;19:455–9.
17. Lam S, Nettel-Aguirre A, Van Biervliet S, Roeb E, Sadler MD, Friedrich-Rust M, et al. Transient elastography in the evaluation of cystic fibrosis-associated liver disease: Systematic review and meta-analysis. *J Can Assoc Gastroenterol*. 2019;2:71–80.
18. Lewindon PJ, Puertolas-Lopez MV, Ramm LE, Noble C, Pereira TN, Wixey JA, et al. Accuracy of transient elastography data combined with APRI in detection and staging of liver disease in pediatric patients with cystic fibrosis. *Clin Gastroenterol Hepatol*. 2019;17:2561–9 e5.
19. Ling SC, Ye W, Leung DH, Navarro OM, Weymann A, Karnsakul W, et al. Liver ultrasound patterns in children with cystic fibrosis correlate with noninvasive tests of liver disease. *J Pediatr Gastroenterol Nutr*. 2019;69:351–7.
20. Sellers ZM, Lee LW, Barth RA, Milla C. New algorithm for the integration of ultrasound into cystic fibrosis liver disease screening. *J Pediatr Gastroenterol Nutr*. 2019;69:404–10.
21. Debray D, Kelly D, Houwen R, Strandvik B, Colombo C. Best practice guidance for the diagnosis and management of cystic fibrosis-associated liver disease. *J Cyst Fibros*. 2011;10(Suppl 2):S29–36.
22. Colombo C, Apostolo MG, Ferrari M, Seia M, Genoni S, Giunta A, et al. Analysis of risk factors for the development of liver disease associated with cystic fibrosis. *J Pediatr*. 1994;124:393–9. doi:10.1016/s0022-3476(94)70361-2
23. Gaskin KJ, Waters DLM, Howman-Giles R, De Silva M, Earl JW, Martin HCO, et al. Liver disease and common-bile-duct stenosis in cystic fibrosis. *N Engl J Med*. 1988;318:340–6.
24. Potter CJ, Fishbein M, Hammond S, McCoy K, Qualman S. Can the histologic changes of cystic fibrosis-associated hepatobiliary disease be predicted by clinical criteria? *J Pediatr Gastroenterol Nutr*. 1997;25:32–6.
25. Ling SC, Wilkinson JD, Hollman AS, McColl J, Evans TJ, Paton JY. The evolution of liver disease in cystic fibrosis. *Arch Dis Child*. 1999;81:129–32.
26. Catarino Costa P, Barreto CC, Pereira L, Lobo ML, Costa MA, Gouveia Lopes AI. Cystic fibrosis-related liver disease: A single-center experience. *Pediatr Rep*. 2011;3:e21.
27. Colombo C, Battezzati PM, Crosignani A, Morabito A, Costantini D, Padoan R, et al. Liver disease in cystic fibrosis: A prospective study on incidence, risk factors, and outcome. *Hepatology*. 2002;36:1374–82.
28. Ciucă IM, Pop L, Tămaș L, Tăban S. Cystic fibrosis liver disease—from diagnosis to risk factors. *Rom J Morphol Embryol*. 2014;55:91–5.
29. Leung DH, Ye W, Schwarzenberg SJ, Freeman AJ, Palermo JJ, Weymann A, et al. Long-term follow-up and liver outcomes in children with cystic fibrosis and nodular liver on ultrasound in a multi-center study. *J Cyst Fibros*. 2023;22:248–55.
30. Osman KT, Maselli DB, Idilman IS, Rowan DJ, Viehman JK, Harmsen WS, et al. Liver Stiffness measured by either magnetic resonance or transient elastography is associated with liver fibrosis and is an independent predictor of outcomes among patients with primary biliary cholangitis. *J Clin Gastroenterol*. 2021;55:449–57.
31. Levitte S, Lee LW, Isaacson J, Zucker EJ, Milla C, Barth RA, et al. Clinical use of shear-wave elastography for detecting liver fibrosis in children and adolescents with cystic fibrosis. *Pediatr Radiol*. 2021;51:1369–77.
32. Malbrunot-Wagner AC, Bridoux L, Nousbaum JB, Riou C, Dirou A, Ginies JL, et al. Transient elastography and portal hypertension in pediatric patients with cystic fibrosis transient elastography and cystic fibrosis. *J Cyst Fibros*. 2011;10:338–42.
33. Rath T, Menendez KM, Kügler M, Hage L, Wenzel C, Schulz R, et al. TIMP-1/-2 and transient elastography allow non invasive diagnosis of cystic fibrosis associated liver disease. *Dig Liver Dis*. 2012;44:780–7.
34. Kitson MT, Kemp WW, Iser DM, Paul E, Wilson JW, Roberts SK. Utility of transient elastography in the non-invasive evaluation of cystic fibrosis liver disease. *Liver Int*. 2013;33:698–705.
35. Lemaitre C, Dominique S, Billoud E, Eliezer M, Montialoux H, Quillard M, et al. Relevance of 3D cholangiography and transient elastography to assess cystic fibrosis-associated liver disease? *Can Respir J*. 2016;2016:4592702.
36. Aqul A, Jonas MM, Harney S, Raza R, Sawicki GS, Mitchell PD, et al. Correlation of transient elastography with severity of cystic

- fibrosis-related liver disease. *J Pediatr Gastroenterol Nutr.* 2017;64:505–11.
37. Ye W, Leung DH, Molleston JP, Ling SC, Murray KF, Nicholas JL, et al. Association between transient elastography and controlled attenuated parameter and liver ultrasound in children with cystic fibrosis. *Hepatol Commun.* 2021;5:1362–72.
  38. Dana J, Girard M, Franchi-Abella S, Berteloot L, Benoit-Cherifi M, Imbert-Bismut F, et al. Comparison of transient elastography, ShearWave elastography, magnetic resonance elastography and FibroTest as routine diagnostic markers for assessing liver fibrosis in children with Cystic Fibrosis. *Clin Res Hepatol Gastroenterol.* 2022;46:101855.
  39. *Guidelines for the Prevention, Care and Treatment of Persons with Chronic Hepatitis B Infection.* 2015. *WHO Guidelines Approved by the Guidelines Review Committee.*
  40. Lemoine M, Shimakawa Y, Nayagam S, Khalil M, Suso P, Lloyd J, et al. The gamma-glutamyl transpeptidase to platelet ratio (GPR) predicts significant liver fibrosis and cirrhosis in patients with chronic HBV infection in West Africa. *Gut.* 2016;65:1369–76.
  41. Chon YE, Choi EH, Song KJ, Park JY, Kim DY, Han KH, et al. Performance of transient elastography for the staging of liver fibrosis in patients with chronic hepatitis B: A meta-analysis. *PLoS One.* 2012;7:e44930.
  42. Paul SB, Das P, Mahanta M, Sreenivas V, Kedia S, Kalra N, et al. Assessment of liver fibrosis in chronic hepatitis: Comparison of shear wave elastography and transient elastography. *Abdom Radiol (NY).* 2017;42:2864–73.
  43. Calvopina DA, Noble C, Weis A, Hartel GF, Ramm LE, Balouch F, et al. Supersonic shear-wave elastography and APRI for the detection and staging of liver disease in pediatric cystic fibrosis. *J Cyst Fibros.* 2020;19:449–54.
  44. Debray D, Corvol H, Housset C. Modifier genes in cystic fibrosis-related liver disease. *Curr Opin Gastroenterol.* 2019;35:88–92.
  45. Ayoub F, Trillo-Alvarez C, Morelli G, Lascano J. Risk factors for hepatic steatosis in adults with cystic fibrosis: Similarities to non-alcoholic fatty liver disease. *World J Hepatol.* 2018;10:34–40.
  46. Sakiani S, Kleiner DE, Heller T, Koh C. Hepatic manifestations of cystic fibrosis. *Clin Liver Dis.* 2019;23:263–77.
  47. Zellos A, Boitnott JK, Schwarz KB. New-onset autoimmune hepatitis in young patients with preexisting liver disease. *Dig Liver Dis.* 2010;42:657–0.
  48. Kotalová R, Jirsa M, Vávrová V, Vrábellová-Pouchlá S, Macek M Jr. Wilson disease as a cause of liver injury in cystic fibrosis. *J Cyst Fibros.* 2009;8:63–5.
  49. Durupt S, Josserand RN, Sibille M, Durieu I. Acute, recurrent fosfomicin-induced liver toxicity in an adult patient with cystic fibrosis. *Scand J Infect Dis.* 2001;33:391–2.
  50. Salehi M, Iqbal M, Dube A, AlJoudeh A, Edenborough F. Delayed hepatic necrosis in a cystic fibrosis patient taking Elexacaftor/Tezacaftor/Ivacaftor (Kaftrio). *Respir Med Case Rep.* 2021;34:101553.
  51. Li G, Fang CH, Fan YF, Wu TC, Zhong SZ. A comparative study of the diagnostic accuracy of the medical image three-dimensional visualization system, MRCP, CT and US in hepatolithiasis. *Hepatogastroenterology.* 2014;61:1901–7.
  52. Park DH, Kim MH, Lee SS, Lee SK, Kim KP, Han JM, et al. Accuracy of magnetic resonance cholangiopancreatography for locating hepatolithiasis and detecting accompanying biliary strictures. *Endoscopy.* 2004;36:987–92.
  53. Sugiyama M, Atomi Y, Takahara T, Hachiya J. Magnetic resonance cholangiopancreatography for diagnosing hepatolithiasis. *Hepatogastroenterology.* 2001;48:1097–1.
  54. Perdue DG, Cass OW, Milla C, Dunitz J, Jessurun J, Sharp HL, et al. Hepatolithiasis and cholangiocarcinoma in cystic fibrosis: a case series and review of the literature. *Dig Dis Sci.* 2007;52:2638–42.
  55. Bilgin M, Burgazli M, Toprak H, Erdogan A, Kocakoc E. Ultrasonography and magnetic resonance imaging findings of abdominal complications of cystic fibrosis. *Eur Rev Med Pharmacol Sci.* 2012;16(suppl 4):48–51.
  56. Pérez-Aguilar F, Martínez-Sanjuán V, Montoliú G, Lloret M, Ferrer-Calvete J, Ponce J, et al. [Usefulness of magnetic cholangioresonance in the study of hepatobiliary disease in patients adults with cystic fibrosis]. *Gastroenterol Hepatol.* 2001;24:122–26.
  57. King LJ, Scurr ED, Murugan N, Williams SGJ, Westaby D, Healy JC. Hepatobiliary and pancreatic manifestations of cystic fibrosis: MR imaging appearances. *Radiographics.* 2000;20:767–7.
  58. Durieu I, Pellet O, Simonot L, Durupt S, Bellon G, Durand DV, et al. Sclerosing cholangitis in adults with cystic fibrosis: A magnetic resonance cholangiographic prospective study. *J Hepatol.* 1999;30:1052–6.
  59. Karlas T, Neuschulz M, Oltmanns A, Güttler A, Petroff D, Wirtz H, et al. Non-invasive evaluation of cystic fibrosis related liver disease in adults with ARFI, transient elastography and different fibrosis scores. *PLoS one.* 2012;7:e42139.
  60. Schwarzenberg SJ, Palermo JJ, Ye W, Huang S, Magee JC, Alazraki A, et al. Health-related quality of life in a prospective study of ultrasound to detect cystic fibrosis-related liver disease in children. *J Pediatr Gastroenterol Nutr.* 2022;75:635–42.
  61. Van Biervliet S, Verdieuvel H, Vande Velde S, De Bruyne R, De Looze D, Verhelst X, et al. Longitudinal transient elastography measurements used in follow-up for patients with cystic fibrosis. *Ultrasound Med Biol.* 2016;42:848–54.
  62. Jordan CL, Noah TL, Henry MM. Therapeutic challenges posed by critical drug-drug interactions in cystic fibrosis. *Pediatr Pulmonol.* 2016;51(S44):S61–70.
  63. Burrus TE, Vogt H, Pettit RS. Impact of a pharmacy technician and pharmacist on time to inhaled tobramycin therapy in a pediatric cystic fibrosis clinic. *Pediatr Pulmonol.* 2021;56:2861–7.
  64. Zobell JT, Moss J, Heuser S, Roe L, Young DC. Understanding the expanding role of pharmacy services in outpatient cystic fibrosis care. *Pediatr Pulmonol.* 2021;56:1378–85.
  65. Wright BA, Singh SB, Schultz JL, Ramsey LJ, Spading KA, Mascardo LA, et al. Impact of pharmacy services on cystic fibrosis transmembrane conductance regulator modulator prescribing at a pediatric cystic fibrosis center. *Pediatr Pulmonol.* 2019;54:1591–5.
  66. Louie J, Hong L, Garavaglia L, Pinal D, O'Brien C. Evaluation of home medication reconciliation by clinical pharmacists for adult and pediatric cystic fibrosis patients. *Pharmacy (Basel).* 2018;6. doi:10.3390/pharmacy6030091
  67. Stonebraker JR, Ooi CY, Pace RG, Corvol H, Knowles MR, Durie PR, et al. Features of severe liver disease with portal hypertension in patients with cystic fibrosis. *Clin Gastroenterol Hepatol.* 2016;14:1207–15 e3.
  68. Aldámiz-Echevarría L, Prieto JA, Andrade F, Elorz J, Sojo A, Lage S, et al. Persistence of essential fatty acid deficiency in cystic fibrosis despite nutritional therapy. *Pediatr Res.* 2009;66:585–9.
  69. Culhane S, George C, Pearo B, Spoede E. Malnutrition in cystic fibrosis: A review. *Nutr Clin Pract.* 2013;28:676–83.
  70. Stallings VA, Stark LJ, Robinson KA, Feranchak AP, Quinton H. Evidence-based practice recommendations for nutrition-related management of children and adults with cystic fibrosis and pancreatic insufficiency: Results of a systematic review. *J Am Diet Assoc.* 2008;108:832–9.
  71. Borowitz D, Baker RD, Stallings V. Consensus report on nutrition for pediatric patients with cystic fibrosis. *J Pediatr Gastroenterol Nutr.* 2002;35:246–59.
  72. Socorro Rayas M, Hughan KS, Javaid R, Kelly A, Salehi M. Characterization of glucose metabolism in youth with vs.

- without cystic fibrosis liver disease: A pilot study. *J Clin Transl Endocrinol.* 2022;28:100296.
73. Rowland M, Gallagher CG, O'Laoide R, Canny G, Broderick A, Hayes R, et al. Outcome in cystic fibrosis liver disease. *Am J Gastroenterol.* 2011;106:104–9.
  74. Leung DH, Ye W, Molleston JP, Weymann A, Ling S, Paranjape SM, et al. Baseline ultrasound and clinical correlates in children with cystic fibrosis. *J Pediatr.* 2015;167:862–8 e2.
  75. Singh H, Coffey MJ, Ooi CY. Cystic fibrosis-related liver disease is associated with increased disease burden and endocrine comorbidities. *J Pediatr Gastroenterol Nutr.* 2020;70:796–800.
  76. Colomba J, Netedu SR, Lehoux-Dubois C, Coriati A, Boudreau V, Tremblay F, et al. Hepatic enzyme ALT as a marker of glucose abnormality in men with cystic fibrosis. *PLoS One.* 2019;14:e0219855.
  77. Dong X, Zhou X. [Management of liver failure by a multidisciplinary team approach]. *Zhonghua Gan Zang Bing Za Zhi.* 2015;23:721–3.
  78. Mitchell AB, Glanville AR. Lung transplantation: a review of the optimal strategies for referral and patient selection. *Ther Adv Respir Dis.* 2019;13:1753466619880078.
  79. Freeman AJ, Sellers ZM, Mazariegos G, Kelly A, Saiman L, Mallory G, et al. A multidisciplinary approach to pretransplant and posttransplant management of cystic fibrosis-associated liver disease. *Liver Transpl.* 2019;25:640–57.
  80. Ye W, Narkewicz MR, Leung DH, Kamsakul W, Murray KF, Alonso EM, et al. Variceal hemorrhage and adverse liver outcomes in patients with cystic fibrosis cirrhosis. *J Pediatr Gastroenterol Nutr.* 2018;66:122–7.
  81. Garcia-Tsao G, Abraldes JG, Berzigotti A, Bosch J. Portal hypertensive bleeding in cirrhosis: Risk stratification, diagnosis, and management: 2016 practice guidance by the American Association for the study of liver diseases. *Hepatology.* 2017;65:310–5.
  82. de Franchis R. Expanding consensus in portal hypertension: report of the Baveno VI Consensus Workshop: Stratifying risk and individualizing care for portal hypertension. *J Hepatol.* 2015;63:743–52.
  83. Szakács Z, Erőss B, Soós A, Mátrai P, Szabó I, Pétervári E, et al. Baveno criteria safely identify patients with compensated advanced chronic liver disease who can avoid variceal screening endoscopy: A diagnostic test accuracy meta-analysis. *Front Physiol.* 2019;10:1028.
  84. Stafylidou M, Paschos P, Katsoula A, Malandris K, Ioakim K, Bekiari E, et al. Performance of Baveno VI and expanded Baveno VI Criteria for excluding high-risk varices in patients with chronic liver diseases: A systematic review and meta-analysis. *Clin Gastroenterol Hepatol.* 2019;17:1744–55 e11.
  85. O'Brien C, Ramlal N, Haughey A, Nolan N, Malone DE, McCormick PA. Hepatocellular carcinoma in cystic fibrosis liver disease: A cautionary tale. *QJM.* 2019;112:693–4.
  86. O'Donnell DH, Ryan R, Hayes B, Fennelly D, Gibney RG. Hepatocellular carcinoma complicating cystic fibrosis related liver disease. *J Cyst Fibros.* 2009;8:288–90.
  87. Kelleher T, Staunton M, O'Mahony S, Aiden McCormick P. Advanced hepatocellular carcinoma associated with cystic fibrosis. *Eur J Gastroenterol Hepatol.* 2005;17:1123–4.
  88. Singal AG, Llovet JM, Yarchoan M, Mehta N, Heimbach JK, Dawson LA, et al. AASLD Practice Guidance on prevention, diagnosis, and treatment of hepatocellular carcinoma. *Hepatology.* 2023.
  89. Galle PR, Forner A, Llovet JM, Mazzaferro V, Piscaglia F, Raoul JL, et al. European Association for the Study of the Liver. Electronic address eee, European Association for the Study of the L. EASL Clinical Practice Guidelines: management of hepatocellular carcinoma. *J Hepatol.* 2018;69:182–236.
  90. Merli M, Bertasi S, Servi R, Diamanti S, Martino F, De Santis A, et al. Effect of a medium dose of ursodeoxycholic acid with or without taurine supplementation on the nutritional status of patients with cystic fibrosis: a randomized, placebo-controlled, crossover trial. *J Pediatr Gastroenterol Nutr.* 1994;19:198–203.
  91. Lepage G, Paradis K, Lacaillle F, Sénéchal L, Ronco N, Champagne J, et al. Ursodeoxycholic acid improves the hepatic metabolism of essential fatty acids and retinol in children with cystic fibrosis. *J Pediatr.* 1997;130:52–8.
  92. Colombo C, Battezzati PM, Podda M, Bettinardi N, Giunta A. Ursodeoxycholic acid for liver disease associated with cystic fibrosis: A double-blind multicenter trial. The Italian Group for the Study of Ursodeoxycholic Acid in Cystic Fibrosis. *Hepatology.* 1996;23:1484–90.
  93. van de Meeberg PC, Houwen RHJ, Sinaasappel M, Heijerman HGM, Bijleveld CMA, Vanberge-Henegouwen GP. Low-dose versus high-dose ursodeoxycholic acid in cystic fibrosis-related cholestatic liver disease. Results of a randomized study with 1-year follow-up. *Scand J Gastroenterol.* 1997;32:369–73.
  94. Desmond CP, Wilson J, Bailey M, Clark D, Roberts SK. The benign course of liver disease in adults with cystic fibrosis and the effect of ursodeoxycholic acid. *Liver Int.* 2007;27:1402–8.
  95. Colombo C, Crosignani A, Assaisso M, Battezzati PM, Podda M, Giunta A, et al. Ursodeoxycholic acid therapy in cystic fibrosis-associated liver disease: A dose-response study. *Hepatology.* 1992;16:924–30.
  96. Galabert C, Montet JC, Lengrand D, Lecuire A, Sotta C, Figarella C, et al. Effects of ursodeoxycholic acid on liver function in patients with cystic fibrosis and chronic cholestasis. *J Pediatr.* 1992;121:138–41.
  97. Lindblad A, Glaumann H, Strandvik B. A two-year prospective study of the effect of ursodeoxycholic acid on urinary bile acid excretion and liver morphology in cystic fibrosis-associated liver disease. *Hepatology.* 1998;27:166–74.
  98. Kappler M, Espach C, Schweiger-Kabesch A, Lang T, Hartl D, Hector A, et al. Ursodeoxycholic acid therapy in cystic fibrosis liver disease—a retrospective long-term follow-up case-control study. *Aliment Pharmacol Ther.* 2012;36:266–73.
  99. Cheng K, Ashby D, Smyth RL. Ursodeoxycholic acid for cystic fibrosis-related liver disease. *Cochrane Database Syst Rev.* 2017;2021:CD000222.
  100. Toledano MB, Mukherjee SK, Howell J, Westaby D, Khan SA, Bilton D, et al. The emerging burden of liver disease in cystic fibrosis patients: A UK nationwide study. *PloS One.* 2019;14:e0212779.
  101. Colombo C, Alicandro G, Oliver M, Lewindon PJ, Ramm GA, Ooi CY, et al. Ursodeoxycholic acid and liver disease associated with cystic fibrosis: a multicenter cohort study. *J Cyst Fibros.* 2022;21:220–6.
  102. Boëlle PY, Debray D, Guillot L, Clement A, Corvol H, French CFMGS. Cystic fibrosis liver disease: outcomes and risk factors in a large cohort of French patients. *Hepatology.* 2019;69:1648–56.
  103. Calvo PL, Giugliano L, Evangelista A, Bignamini E, Pinon M. The effects of CFTR modulator therapies on liver stiffness and bile flow: A single centre experience. *J Hepatol.* 2023;79.
  104. Schnell A, Jüngert J, Klett D, Hober H, Kaiser N, Ruppel R, et al. Increase of liver stiffness and altered bile acid metabolism after triple CFTR modulator initiation in children and young adults with cystic fibrosis. *Liver Int.* 2023;43:878–87.
  105. Levitte S, Fuchs Y, Wise R, Sellers ZM. Effects of CFTR modulators on serum biomarkers of liver fibrosis in children with cystic fibrosis. *Hepatol Commun.* 2023;7:e0010.
  106. Drummond D, Dana J, Berteloot L, Schneider-Futschik EK, Chedevergne F, Bailly-Botuha C, et al. Lumacaftor-ivacaftor effects on cystic fibrosis-related liver involvement in adolescents with homozygous F508 del-CFTR. *J Cyst Fibros.* 2022;21:212–9.
  107. Gelzo M, Iacotucci P, Caputo M, Cernera G, Comegna M, Carnovale V, et al. Lumacaftor/ivacaftor improves liver

- cholesterol metabolism but does not influence hypocholesterolemia in patients with cystic fibrosis. *J Cyst Fibros.* 2021;20:e1–6.
108. Kutney K, Donnola SB, Flask CA, Gubitosi-Klug R, O’Riordan M, McBennett K, et al. Lumacaftor/ivacaftor therapy is associated with reduced hepatic steatosis in cystic fibrosis patients. *World J Hepatol.* 2019;11:761–2.
  109. Ramsey ML, Wellner MR, Porter K, Kirkby SE, Li SS, Lara LF, et al. Cystic fibrosis patients on cystic fibrosis transmembrane conductance regulator modulators have a reduced incidence of cirrhosis. *World J Hepatol.* 2022;14:411–9.
  110. Hayes D Jr, Warren PS, McCoy KS, Sheikh SI. Improvement of hepatic steatosis in cystic fibrosis with ivacaftor therapy. *J Pediatr Gastroenterol Nutr.* 2015;60:578–9.
  111. van de Peppel IP, Doktorova M, Berkers G, de Jonge HR, Houwen RHJ, Verkade HJ, et al. IVACAFTOR restores FGF19 regulated bile acid homeostasis in cystic fibrosis patients with an S1251N or a G551D gating mutation. *J Cyst Fibros.* 2019;18:286–93.
  112. Stylemans D, François S, Vincken S, Verbanck S, Vanderhelst E. A case of self-limited drug induced liver injury under treatment with elexacaftor/tezacaftor/ivacaftor: When it is worth taking the risk. *J Cyst Fibros.* 2021;20:712–4.
  113. Lowry S, Mogayzel PJ, Oshima K, Karnsakul W. Drug-induced liver injury from elexacaftor/ivacaftor/tezacaftor. *J Cyst Fibros.* 2022;21:e99–101.
  114. McKone EF, Borowitz D, Drevinek P, Griese M, Konstan MW, Wainwright C, et al. Long-term safety and efficacy of ivacaftor in patients with cystic fibrosis who have the Gly551Asp-CFTR mutation: a phase 3, open-label extension study (PERSIST). *Lancet Respir Med.* 2014;2:902–10.
  115. Milla CE, Ratjen F, Marigowda G, Liu F, Waltz D, Rosenfeld M. Lumacaftor/ivacaftor in Patients aged 6-11 years with cystic fibrosis and homozygous for F508del-CFTR. *Am J Respir Crit Care Med.* 2017;195:912–20.
  116. Keating D, Marigowda G, Burr L, Daines C, Mall MA, McKone EF, et al. VX-445-tezacaftor-ivacaftor in patients with cystic fibrosis and one or two Phe508del alleles. *N Engl J Med.* 2018;379:1612–20.
  117. Flume PA, Biner RF, Downey DG, Brown C, Jain M, Fischer R, et al. Long-term safety and efficacy of tezacaftor-ivacaftor in individuals with cystic fibrosis aged 12 years or older who are homozygous or heterozygous for Phe508del CFTR (EXTEND): An open-label extension study. *Lancet Respir Med.* 2021;9:733–46.
  118. Ratjen F, Hug C, Marigowda G, Tian S, Huang X, Stanojevic S, et al. Efficacy and safety of lumacaftor and ivacaftor in patients aged 6-11 years with cystic fibrosis homozygous for F508del-CFTR: a randomised, placebo-controlled phase 3 trial. *Lancet Respir Med.* 2017;5:557–67.
  119. Heijerman HGM, McKone EF, Downey DG, Van Braeckel E, Rowe SM, Tullis E, et al. Efficacy and safety of the elexacaftor plus tezacaftor plus ivacaftor combination regimen in people with cystic fibrosis homozygous for the F508del mutation: A double-blind, randomised, phase 3 trial. *Lancet.* 2019;394:1940–8.
  120. Ragan H, Autry E, Bomersback T, Hewlett J, Kormelink L, Safirstein J, et al. The use of elexacaftor/tezacaftor/ivacaftor in patients with cystic fibrosis postliver transplant: A case series. *Pediatr Pulmonol.* 2022;57:411–7.
  121. McKinzie CJ, Doligalski CT, Lobritto SJ, Coakley RD, Gower WA. Use of elexacaftor/tezacaftor/ivacaftor in liver transplant patients with cystic fibrosis. *J Cyst Fibros.* 2022;21:227–9.
  122. Shapira R, Hadzic N, Francavilla R, Koukulis G, Price JF, Mieli-Vergani G. Retrospective review of cystic fibrosis presenting as infantile liver disease. *Arch Dis Child.* 1999;81:125–8.
  123. Mousa MS, Feldman JC, Mahajan P. Microgallbladder: Self-remitting acute cholecystitis-like condition unique to patients with cystic fibrosis. *Case Rep Radiol.* 2019;2019:6737428.
  124. Giuliano V, Dadparvar S, Savit R, Holsclaw D. Contracted gallbladder: A cause of false-positive hepatobiliary scan in patients with cystic fibrosis. *Eur J Nucl Med.* 1996;23:595–7.
  125. Fawcett LK, Widger J, Henry GM, Ooi CY. Case report: Cholecystoduodenostomy for cholestatic liver disease in a premature infant with cystic fibrosis and short gut syndrome. *BMC Pediatr.* 2019;19:78.
  126. Safirstein J, Grant JJ, Clausen E, Savant D, Dezube R, Hong G. Biliary disease and cholecystectomy after initiation of elexacaftor/ivacaftor/tezacaftor in adults with cystic fibrosis. *J Cyst Fibros.* 2021;20:506–10.
  127. Stern RC, Rothstein FC, Doershuk CF. Treatment and prognosis of symptomatic gallbladder disease in patients with cystic fibrosis. *J Pediatr Gastroenterol Nutr.* 1986;5:35–40.
  128. Snyder CL, Ferrell KL, Saltzman DA, Warwick WJ, Leonard AS. Operative therapy of gallbladder disease in patients with cystic fibrosis. *Am J Surg.* 1989;157:557–61.
  129. Vetter RJ. Probability of causation. Implications for radiation protection. *Health Phys.* 1993;64:115.
  130. Cogliandolo A, Patania M, Currò G, Chillè G, Magazzù G, Navarra G. Postoperative outcomes and quality of life in patients with cystic fibrosis undergoing laparoscopic cholecystectomy: A retrospective study. *Surg Laparosc Endosc Percutan Tech.* 2011;21:179–83.
  131. de Franchis R, Bosch J, Garcia-Tsao G, Reiberger T, Ripoll C, Abraldes JG, et al. Renewing consensus in portal hypertension. *J Hepatol.* 2022;76:959–74.
  132. Palaniappan SK, Than NN, Thein AW, van Mourik I. Interventions for preventing and managing advanced liver disease in cystic fibrosis. *Cochrane Database Syst Rev.* 2020;2020:CD012056.
  133. Jeanniard-Malet O, Duché M, Fabre A. Survey on clinical practice of primary prophylaxis in portal hypertension in children. *J Pediatr Gastroenterol Nutr.* 2017;64:524–7.
  134. Arnon R, Annunziato RA, Miloh T, Padilla M, Sogawa H, Batemarco L, et al. Liver and combined lung and liver transplantation for cystic fibrosis: Analysis of the UNOS database. *Pediatr Transplant.* 2011;15:254–64.
  135. Nightingale S, O’Loughlin EV, Dorney SFA, Shun A, Verran DJ, Strasser SI, et al. Isolated liver transplantation in children with cystic fibrosis—an Australian experience. *Pediatr Transplant.* 2010;14:779–85.
  136. Mendizabal M, Reddy KR, Cassuto J, Olthoff KM, Faust TW, Makar GA, et al. Liver transplantation in patients with cystic fibrosis: analysis of United Network for Organ Sharing data. *Liver Transpl.* 2011;17:243–50.
  137. Debray D, Lykavieris P, Gauthier F, Dousset B, Sartet A, Munck A, et al. Outcome of cystic fibrosis-associated liver cirrhosis: management of portal hypertension. *J Hepatol.* 1999;31:77–83.
  138. Lemoine C, Lokar J, McColley SA, Alonso EM, Superina R. Cystic fibrosis and portal hypertension: Distal splenorenal shunt can prevent the need for future liver transplant. *J Pediatr Surg.* 2019;54:1076–82.
  139. Miller MR, Sokol RJ, Narkewicz MR, Sontag MK. Pulmonary function in individuals who underwent liver transplantation: from the US cystic fibrosis foundation registry. *Liver Transpl.* 2012;18:585–93.
  140. Dowman JK, Watson D, Loganathan S, Gunson BK, Hodson J, Mirza DF, et al. Long-term impact of liver transplantation on respiratory function and nutritional status in children and adults with cystic fibrosis. *Am J Transplant.* 2012;12:954–64.
  141. Flemming G, Baumann U, Richter N, Vondran F, Tümmler B, Dittrich AM, et al. Survival benefits following liver transplantation:



- A matched-pair analysis in pediatric patients with cystic fibrosis. *J Pediatr Gastroenterol Nutr.* 2021;73:385–90.
142. Desai CS, Gruessner A, Habib S, Gruessner R, Khan KM. Survival of cystic fibrosis patients undergoing liver and liver-lung transplantations. *Transplant Proc.* 2013;45:290–2.
  143. Kapnadak SG, Dimango E, Hadjiliadis D, Hempstead SE, Tallarico E, Pilewski JM, et al. Cystic Fibrosis Foundation consensus guidelines for the care of individuals with advanced cystic fibrosis lung disease. *J Cyst Fibros.* 2020;19:344–54.
  144. Stauffer K, Halilbasic E, Trauner M, Kazemi-Shirazi L. Cystic fibrosis related liver disease—another black box in hepatology. *Int J Mol Sci.* 2014;15:13529–49.
  145. Freischlag KW, Messina J, Ezekian B, Mulvihill MS, Barbas A, Berg C, et al. Single-center long-term analysis of combined liver-lung transplant outcomes. *Transplant Direct.* 2018;4:e349.
  146. Morrell MR, Kiel SC, Pilewski JM. Organ transplantation for cystic fibrosis. *Semin Respir Crit Care Med.* 2019;40:842–56.
  147. Yi SG, Burroughs SG, Loebe M, Scheinin S, Seethamraju H, Jyothula S, et al. Combined lung and liver transplantation: Analysis of a single-center experience. *Liver Transpl.* 2014;20:46–53.
  148. Faro A, Shepherd R, Huddleston CB, Lowell J, Gandhi S, Nadler M, et al. Lower incidence of bronchiolitis obliterans in pediatric liver-lung transplant recipients with cystic fibrosis. *Transplantation.* 2007;83:1435–39.
  149. Mallea J, Bolan C, Cortese C, Harnois D. Cystic fibrosis-associated liver disease in lung transplant recipients. *Liver Transpl.* 2019;25:1265–75.
  150. Wu H, Vu M, Dhingra S, Ackah R, Goss JA, Rana A, et al. Obliterative portal venopathy without cirrhosis is prevalent in pediatric cystic fibrosis liver disease with portal hypertension. *Clin Gastroenterol Hepatol.* 2019;17:2134–6.
  151. Braun JP, Siest G, Rico AG. Uses of gamma-glutamyltransferase in experimental. *toxicology Adv Vet Sci Comp Med.* 1987;31:151–72.
  152. Witters P, Libbrecht L, Roskams T, De Boeck K, Dupont L, Proesmans M, et al. Liver disease in cystic fibrosis presents as non-cirrhotic portal hypertension. *J Cyst Fibros.* 2017;16:e11–3.
  153. Fustik S. Liver cirrhosis and portal hypertension in cystic fibrosis. *Srp Arh Celok Lek Nov-.* 2013;141:764–9.
  154. Witters P, Libbrecht L, Roskams T, Boeck KD, Dupont L, Proesmans M, et al. Noncirrhotic presinusoidal portal hypertension is common in cystic fibrosis-associated liver disease. *Hepatology.* 2011;53:1064–5.

**How to cite this article:** Sellers ZM, Assis DN, Paranjape SM, Sathe M, Bodewes F, Bowen M, et al. Cystic fibrosis screening, evaluation, and management of hepatobiliary disease consensus recommendations. *Hepatology.* 2024;79:1220–1238. <https://doi.org/10.1097/HEP.0000000000000646>